

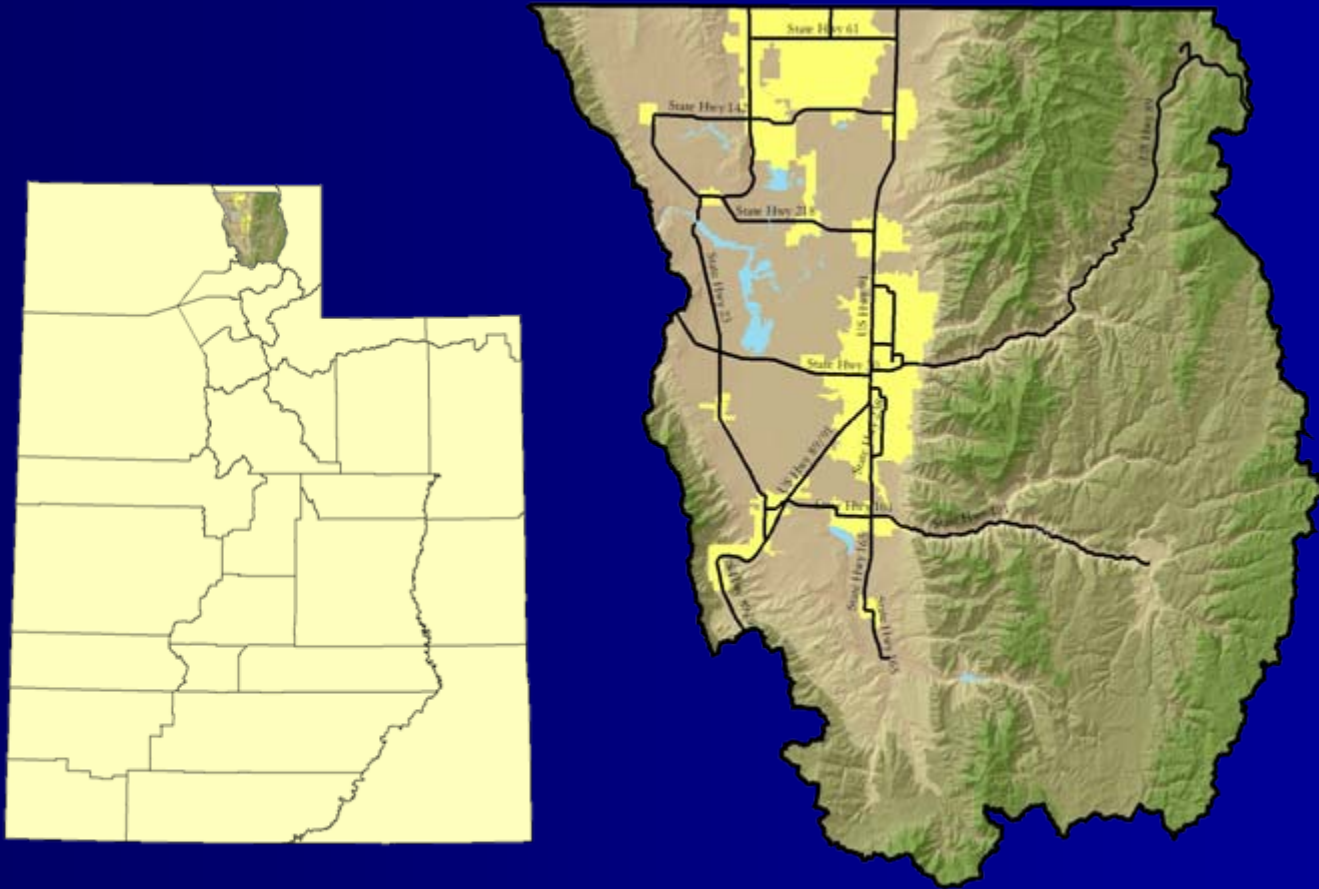
Jurisdictional Coordination In Access Management Cache Valley Access Management Program (CAMP)

Jeff Gilbert, Transportation Planner
(435) 716-7154
Jeff.gilbert@cachecounty.org





Cache County, Utah



Region Characteristics

Cache Valley

- 100,000+ County Population.
- Growing Annually at about 3%.
- VMT growing at about 6%.
- No Freeways in Cache County.
- Home of Utah State University



The Challenge of Growth

- 1984

(7 years)

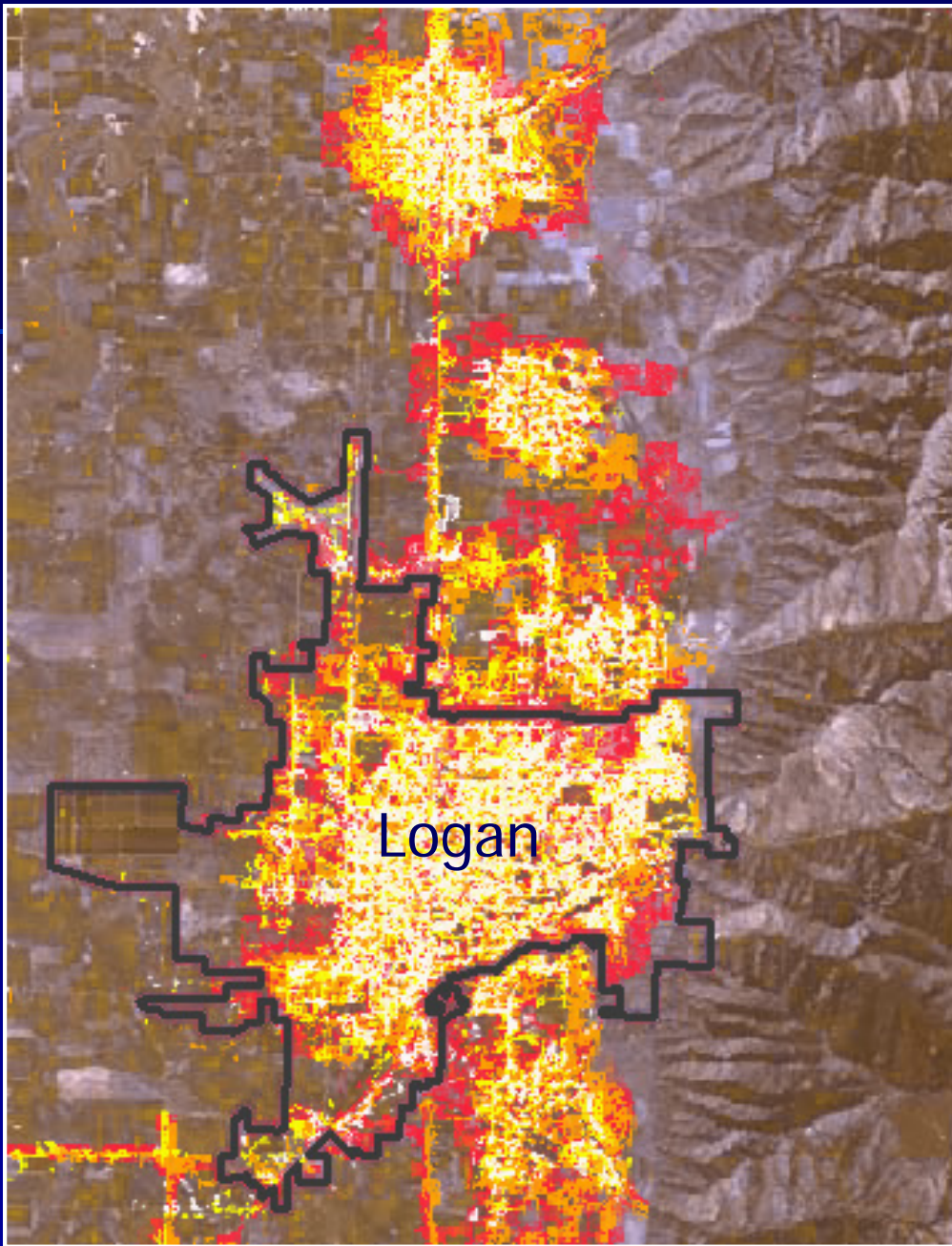
- 1991

(5 years)

- 1996

(5 years)

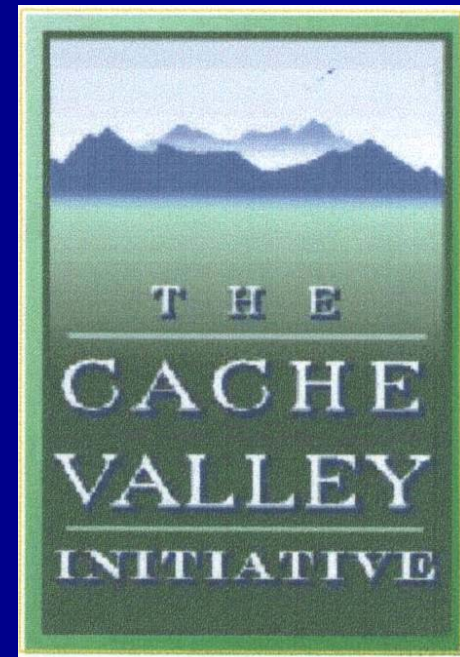
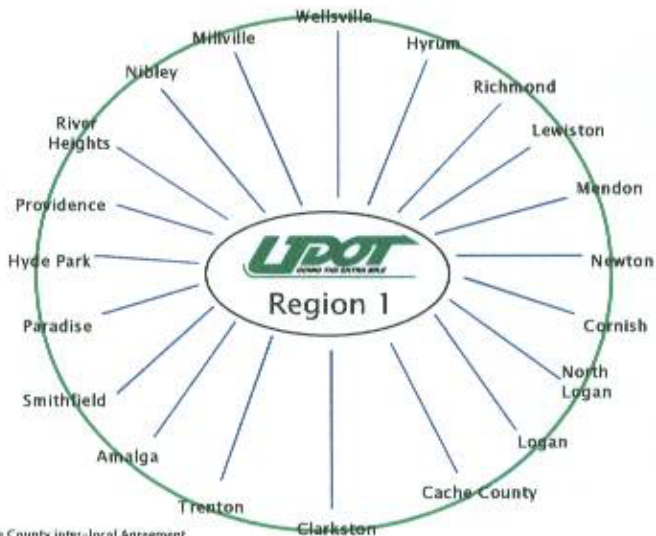
- 2001



Access Management for Economic Vitality

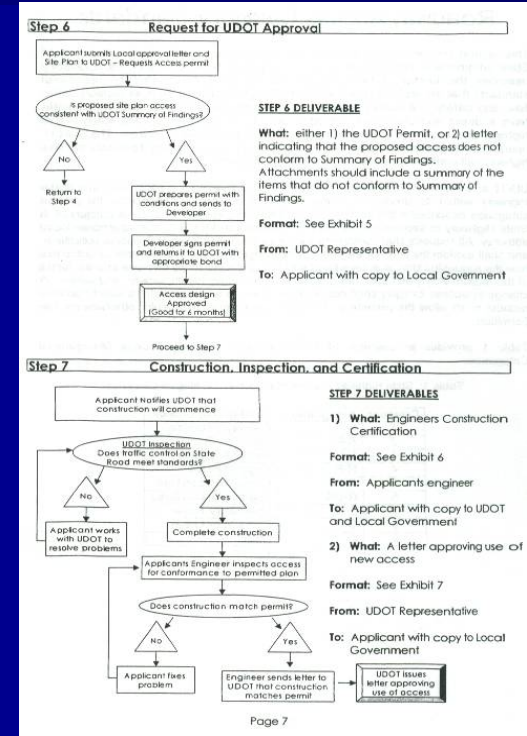
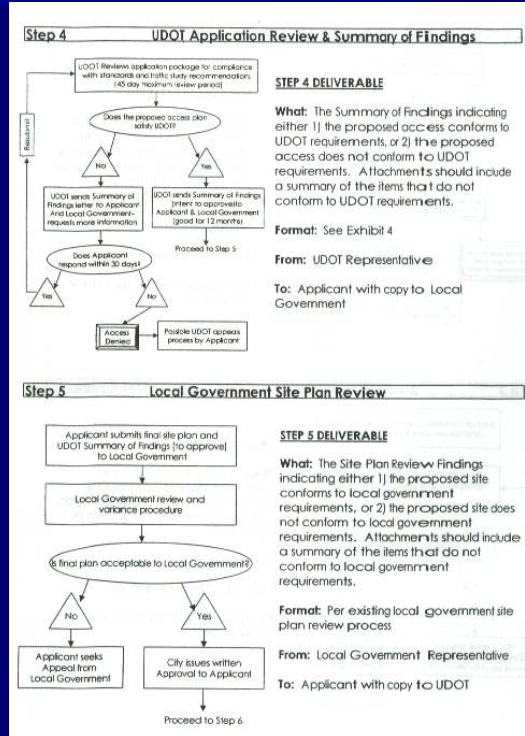
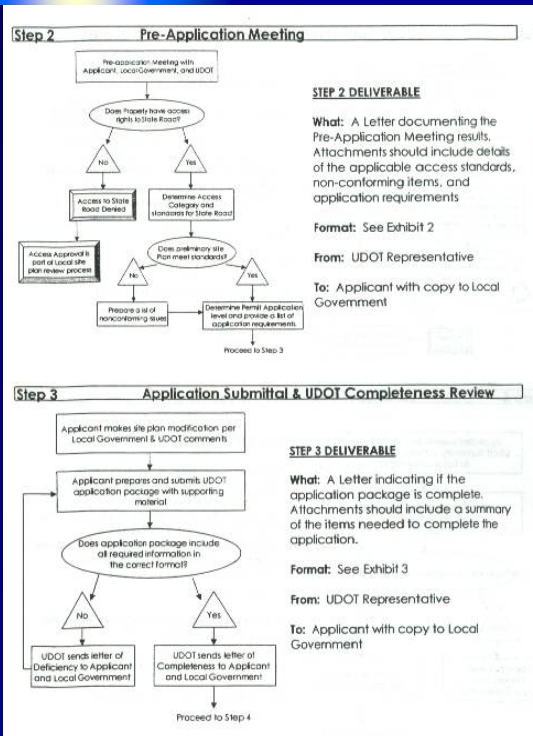
Interim Cache Access Management Program

DRAFT #2 – February 2002



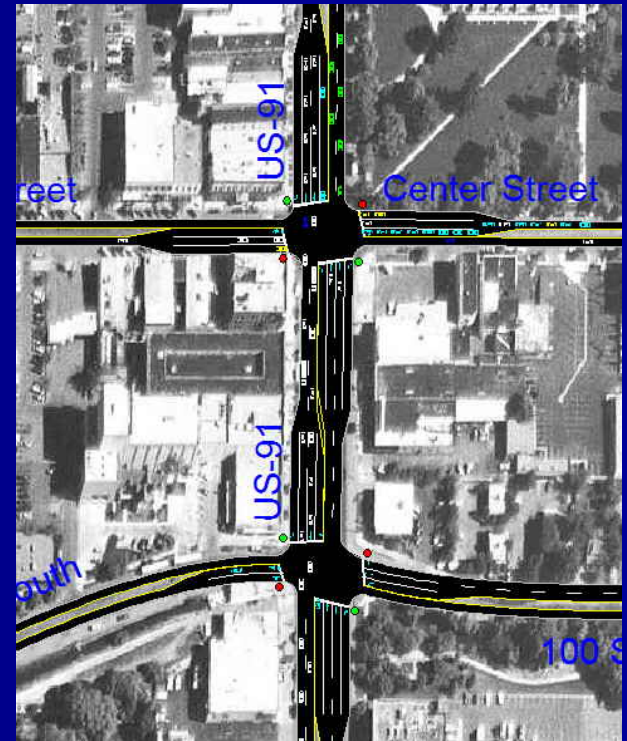
Cache Valley Access Management Program

Willing “Guinea Pig” for the State DOT



Transition to Statewide Access Management

- Administrative Rule R930-6, Sept 2003
- Underlying authority now from state code verses interlocal agreements
- City Interlocal Agreements were sunseted
- Substance of the Program still the same
- Pre-application Meeting still emphasized



Relationships are Key



Pre-Application Coordination Meeting

Key to the Program Success!

- Starts with each city
- Cities give out pre-application form
- Meeting held twice a month
- Includes Applicant, County/CMPO, UDOT Traffic Engineer and local jurisdiction
- Approvals are not granted at the meeting, however everyone goes away with an understanding of what will be required.
- UDOT send courtesy copies of correspondence

Pre-Application Coordination Meeting

What do you get

- Accurate information; eliminates applicant playing one entity off the other.
- Applicant gets early answers and clear guidance
- Access approval process can work in concert with development approval process
- Chance to collectively explore access options
- Education (for planners, engineers, developers etc)
- Increases program buy-in by cities



Build to Suit
18+ Acres
Alvin H. Panko, COB
435-757-7610

You win a few & You lose a few

Corridor Agreements

Proactive Access Management



Lessons Learned

- Local Support is Critical
- Must have a DOT with a backbone
- Must apply standards fair and consistent
- Process needs to be “user friendly” and simple