

CONTEXT SENSITIVE DESIGN & ACCESS MANAGEMENT

Nikiforos Stamatiadis, Ph.D., P.E.
University of Kentucky



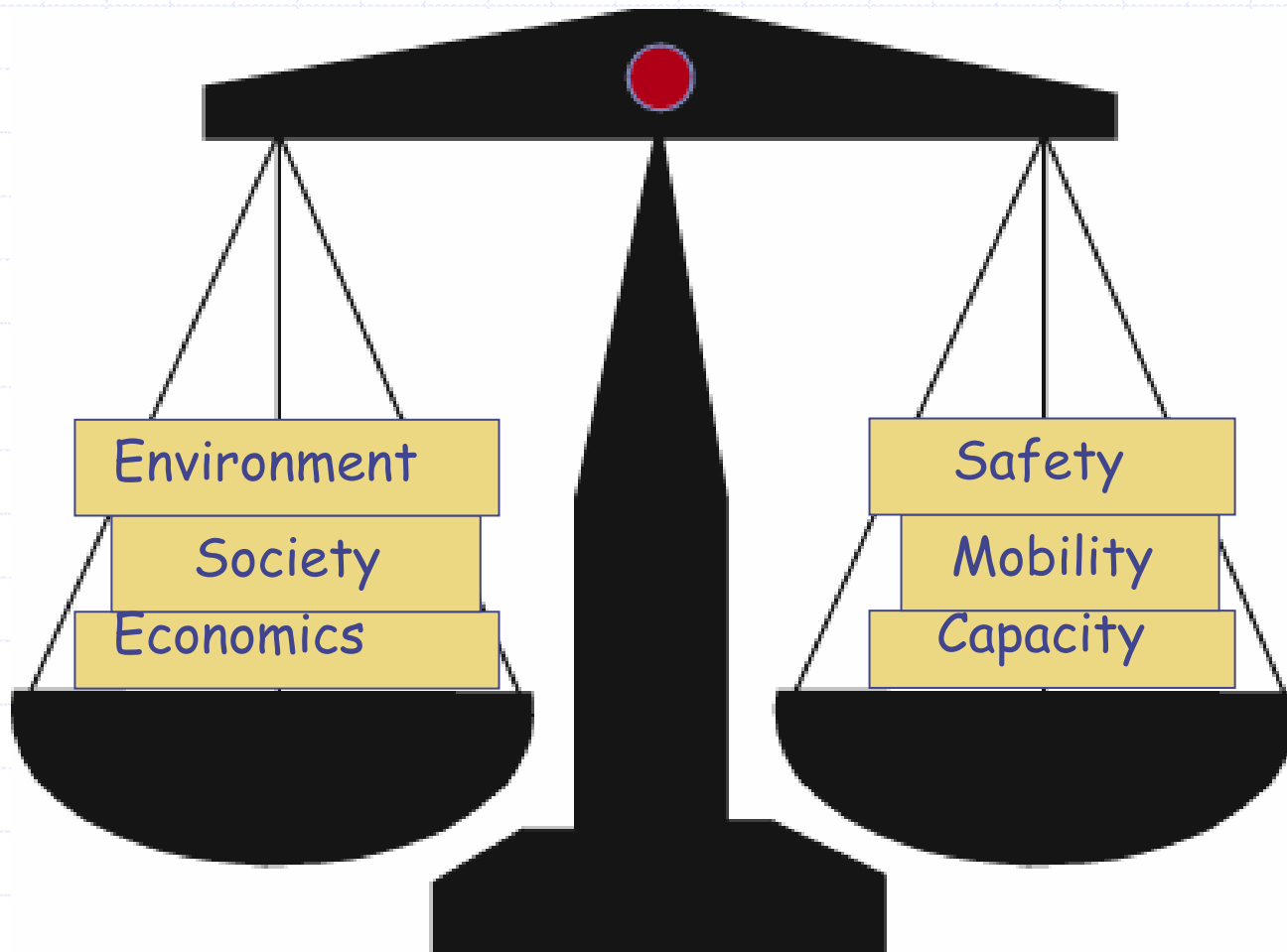
Context Sensitive Design/Solutions

- ◆ A project development process
- ◆ Project design aims to balance safety, mobility, environment, community
- ◆ **Equal** treatment and consideration for all factors throughout the entire project life

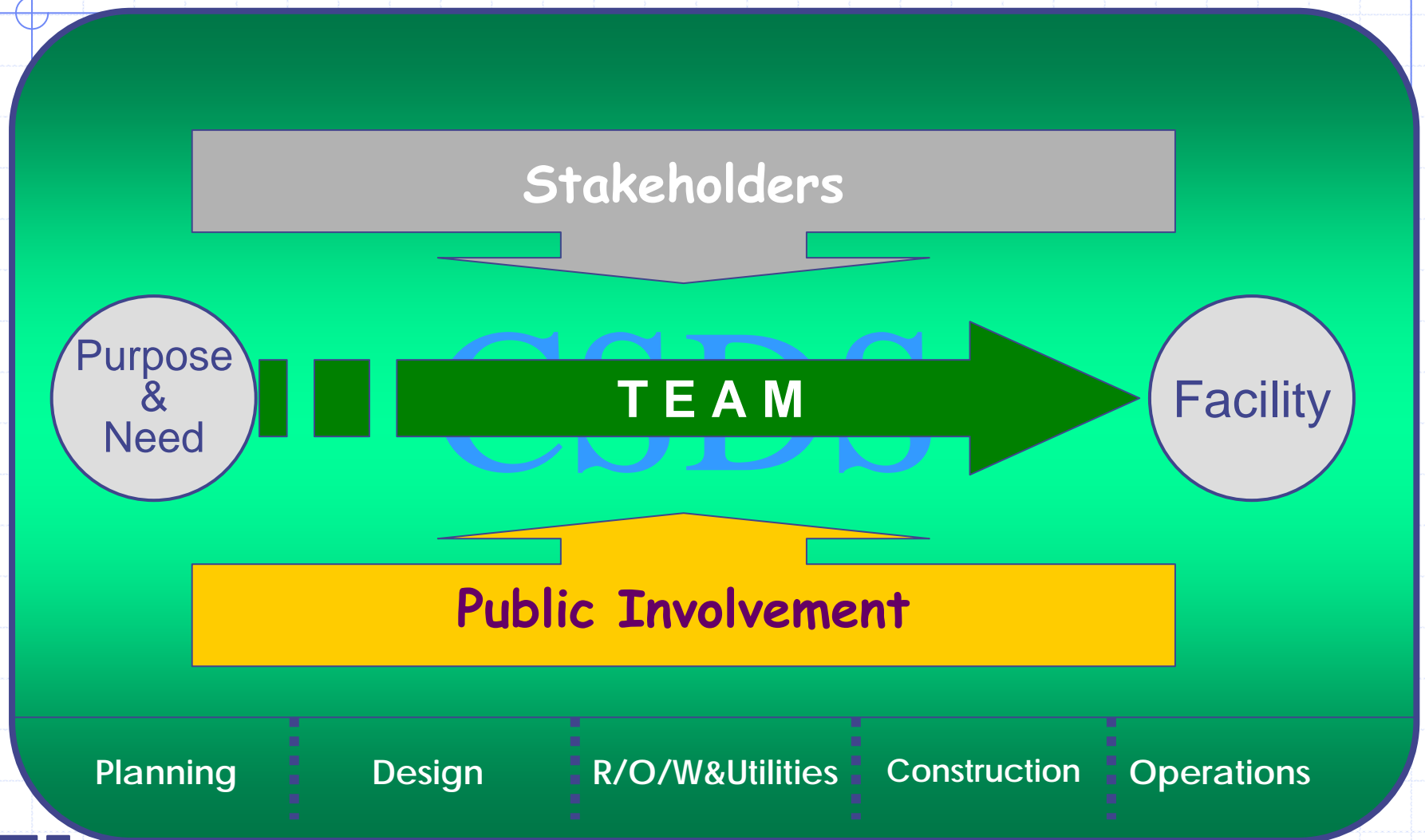
Design Excellence



Basic Concepts: Balancing



Basic Concepts: Collaboration



Basic Concepts: Design Principle

Well designed facilities

- ◆ Handle traffic efficiently and safely
- ◆ Fit nicely into their surroundings
- ◆ Address community's needs and desires

Access Management

- ◆ Direct impacts on
 - Safety
 - Mobility
 - Community
- ◆ Importance on project development

Access Management

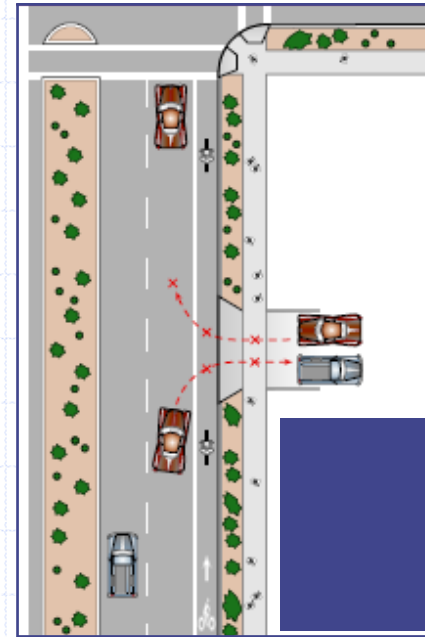
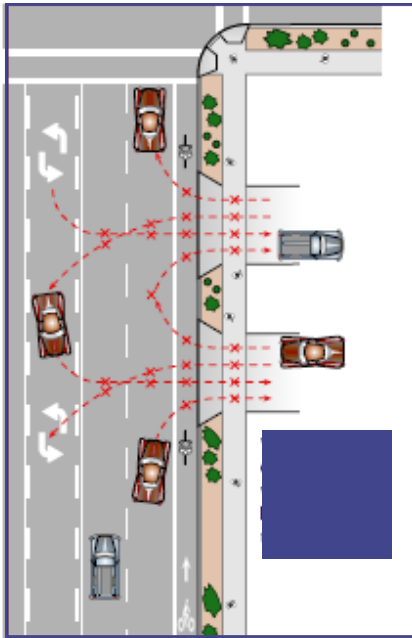
(1/2)

- ◆ Concerns with
 - Safety
 - Capacity
 - Delays
 - Environmental impacts



Access Management

(2/2)



Without access management
Numerous conflict points

CSS & AM Examples

(1/3)



CSS & AM Examples

(2/3)



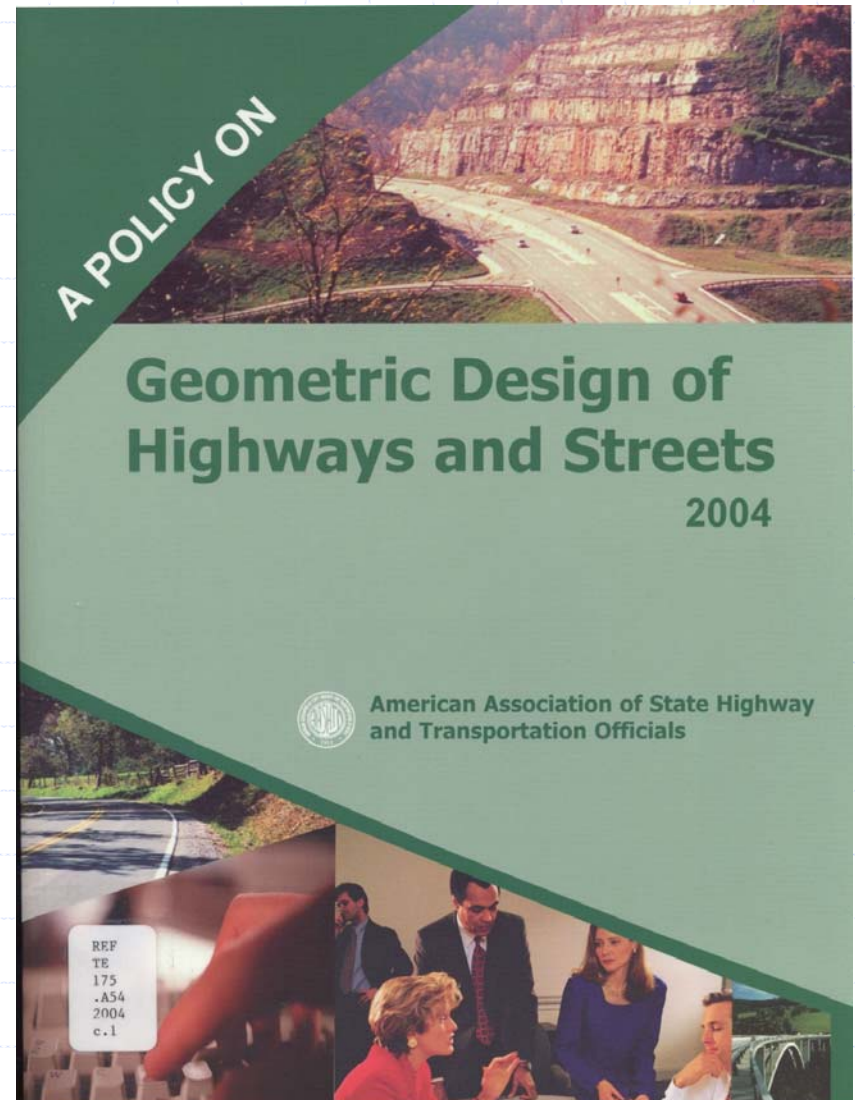
CSS & AM Examples

(3/3)



Tools for Flexible Design

- ◆ Guidance
- ◆ Starting point for designs
- ◆ Understand area context
- ◆ Lack of emphasis on access management



Basic Concepts

Safety Concerns

It's just a matter of doing the right thing, in the right way, in the right place.

Scenic Impacts

It takes public involvement and stakeholder collaboration to define each project's situation and then a little design creativity combined with practical roadway geometrics to find the preferable solution. different..

What's Next?

- ◆ CSS moves on
- ◆ AM becomes practice nationwide
- ◆ Integrate AM within CSS