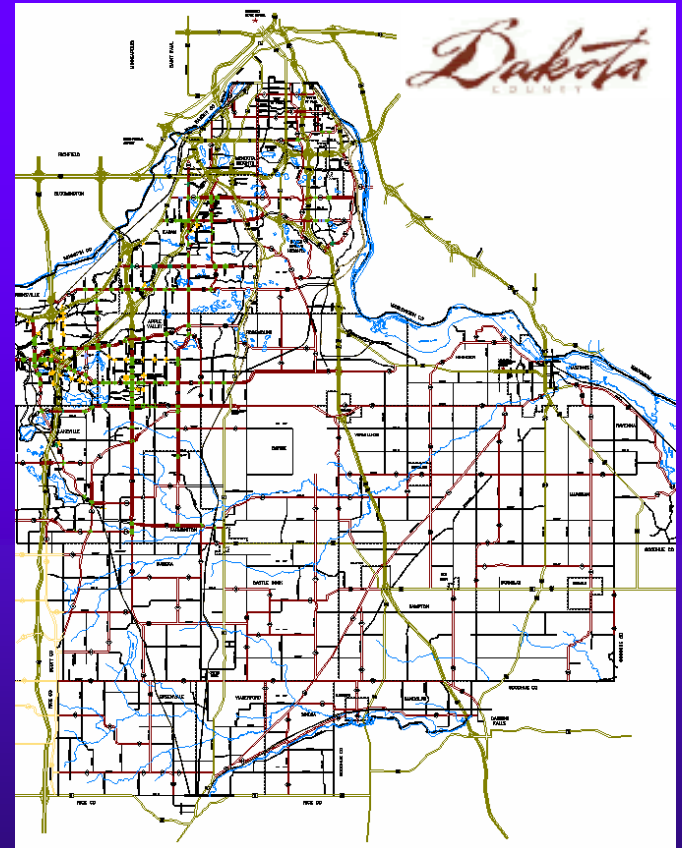
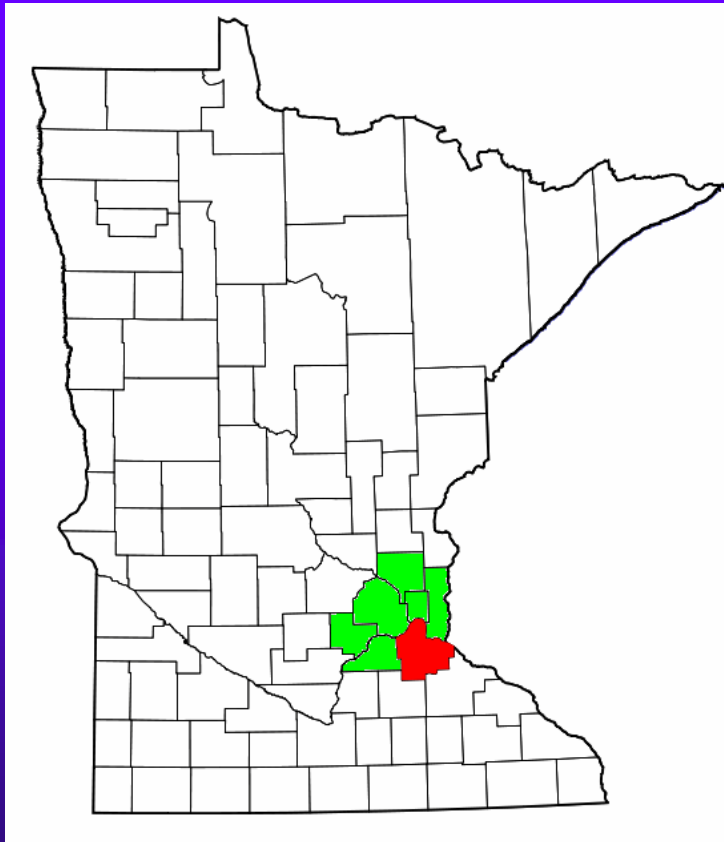




Implementing Dakota County's Access Management Plan

Kristi M. Sebastian, P.E., P.T.O.E.
Dakota County Traffic Engineer

Welcome to Dakota County, Minnesota



- 1.4% growth in population
- 5% Vehicle Miles Traveled increase



Dakota County Access Management Practices

- ◆ Statutes - Ordinances
- ◆ Transportation Plan
- ◆ Corridor Studies



Contiguous Plat Ordinance

- ◆ State Legislation – 1973
 - Specific to Dakota County
- ◆ Plat Ordinance – 1973
- ◆ Plat Ordinance Updates - 2005

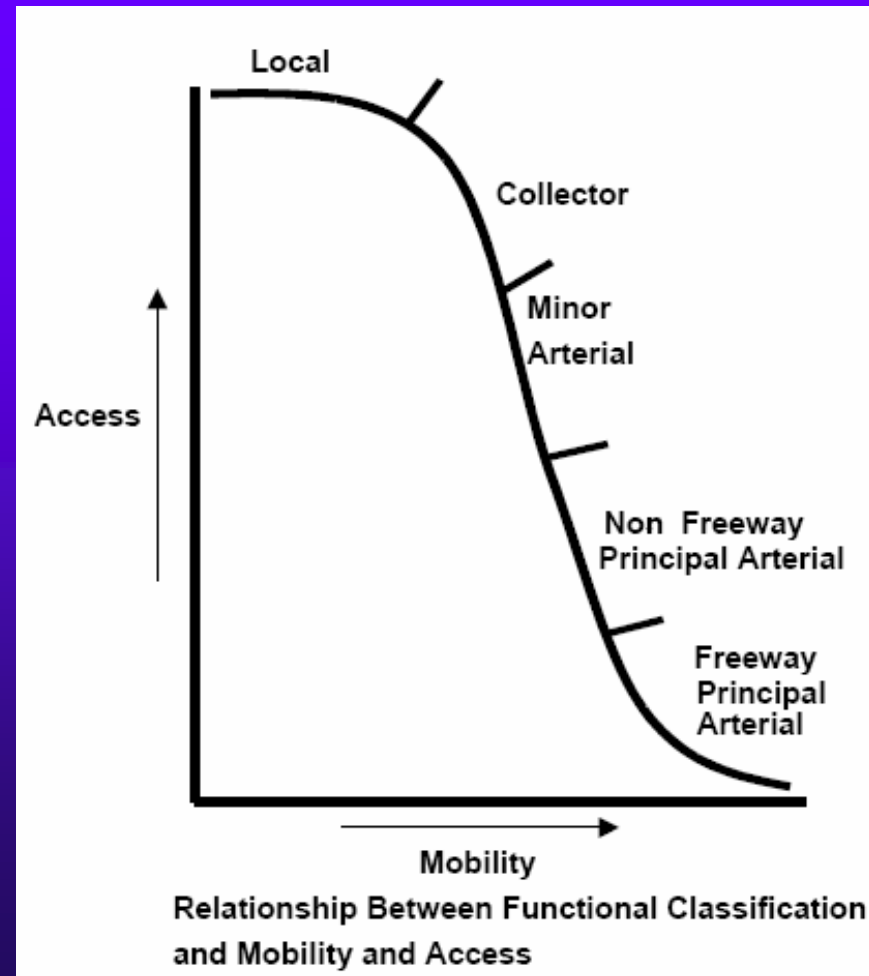


Dakota County 2025 Transportation Plan

- ◆ Adopted July 2004
- ◆ Identifies several issues and strategies for access management

Access Spacing Guide

- ◆ Reduce/consolidate access to maximize operations, safety, and mobility
- ◆ Address each highway type in a manner to balance access and mobility



Access Spacing Guide

		Divided Highways		Undivided Highways		
Functional classification	Principal Arterial	Non-P.A.	Non-P.A.	Non-P.A.	Non-P.A.	Non-P.A.
2025 Projected ADT	All	>35,000	15,000 to 35,000	15,000 to 22,000	<15,000	<3,000
Full Movement Public Street Intersections (a)	$\frac{1}{2}$ mile	$\frac{1}{2}$ mile	$\frac{1}{4}$ mile (c)	$\frac{1}{4}$ mile (c)	$\frac{1}{8}$ mile (c), (d)	(b), (d)
$\frac{3}{4}$ Public Street Access (a)	$\frac{1}{4}$ mile (a)	$\frac{1}{4}$ mile (a)	$\frac{1}{8}$ mile Right-in/ Right-out only (c)	N/A	N/A	N/A

Access Spacing Changes

- ◆ Half-mile full access

- Principal Arterials & Roads > 35,000 ADT

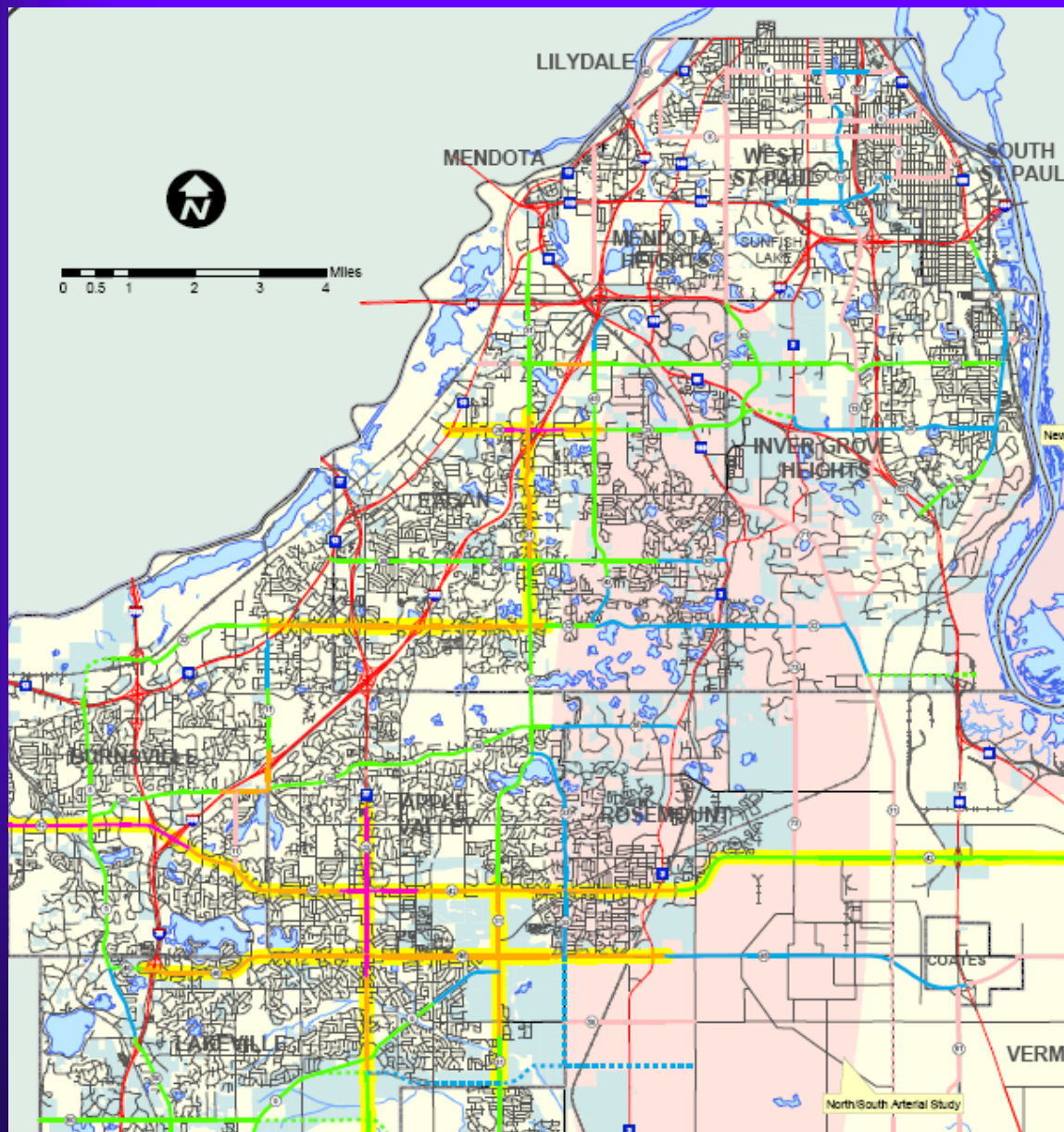


Access Spacing Changes

- ◆ Eighth-mile right-in/right out eliminated



County Road Plat Review Needs



- 2 - LANE (1/2 ROW- 55' Rural Design, 50' Urban)
- 4 - LANE UNDIVIDED (1/2 ROW- 60')
- 4 - LANE DIVIDED (1/2 ROW- 75')
- 6 - LANE (1/2 ROW- 100')
- EXCEEDS 6 - LANE (1/2 ROW- 100')
- 1/2 MILE FULL ACCESS SPACING
- NEW ALIGNMENTS
- FUTURE LAND USE 2000-2025
- NEW ALIGNMENT STUDY AREAS

Note: Highway corridor studies may guide specific access locations.
(eg. CSAH 42 Corridor Study)







Right-of-Way Ordinance

- ◆ Adopted in 2002
- ◆ Current revisions being proposed
 - Addresses access management
 - Specific conditions for permits



Plat Commission

- ◆ Review committee provides technical assessment
- ◆ Factors of countywide significance
 -  Ingress and egress to and from county roads
 - Approach grade intersection with county roads
 - Drainage
 -  Safety standards
 - Right-of-way requirements of county roads
 -  Local road system integration with the county road system
 -  Land use impact of development on the county road system

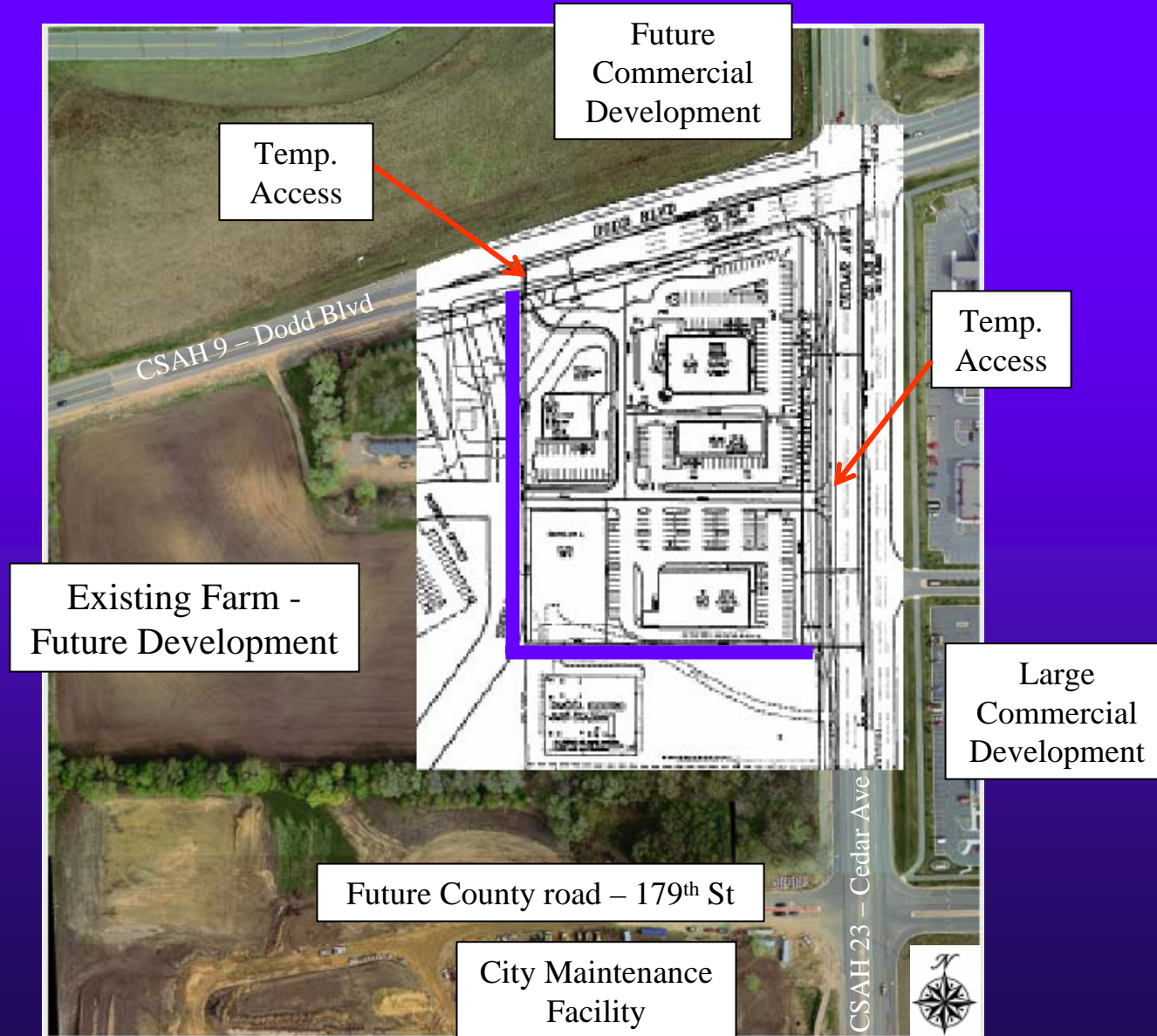
Local Road Integration

36-Acre Residential Development



Developing Interim & Alternate Plan

7-Acre Commercial Development





Commission's Objectives

- ◆ Work with developers early
- ◆ Plan for future
- ◆ Educate and coordinate

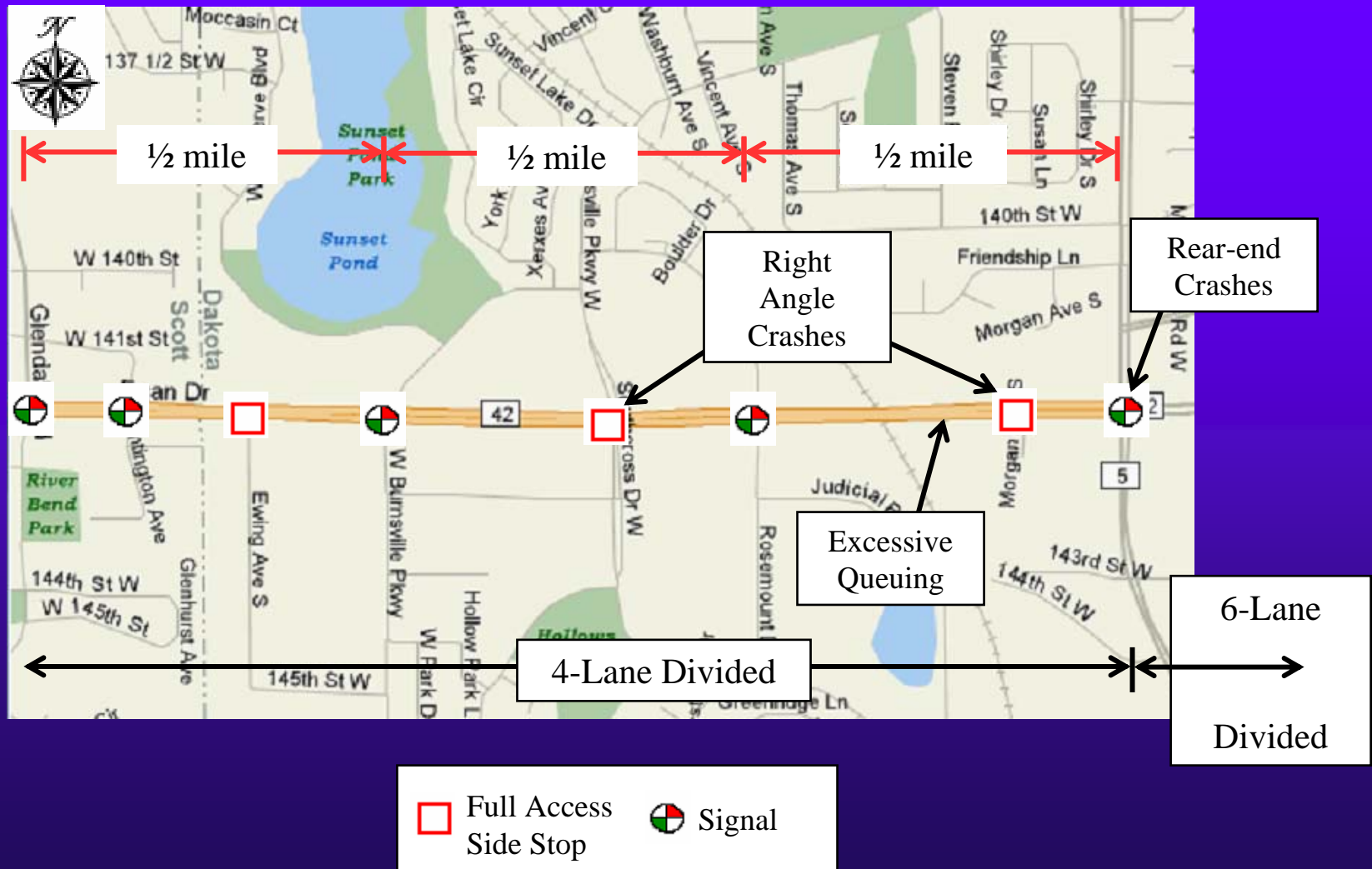
Corridor Studies



- ◆ Assess existing and future conditions
- ◆ Develop consent for preferred plan

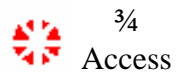
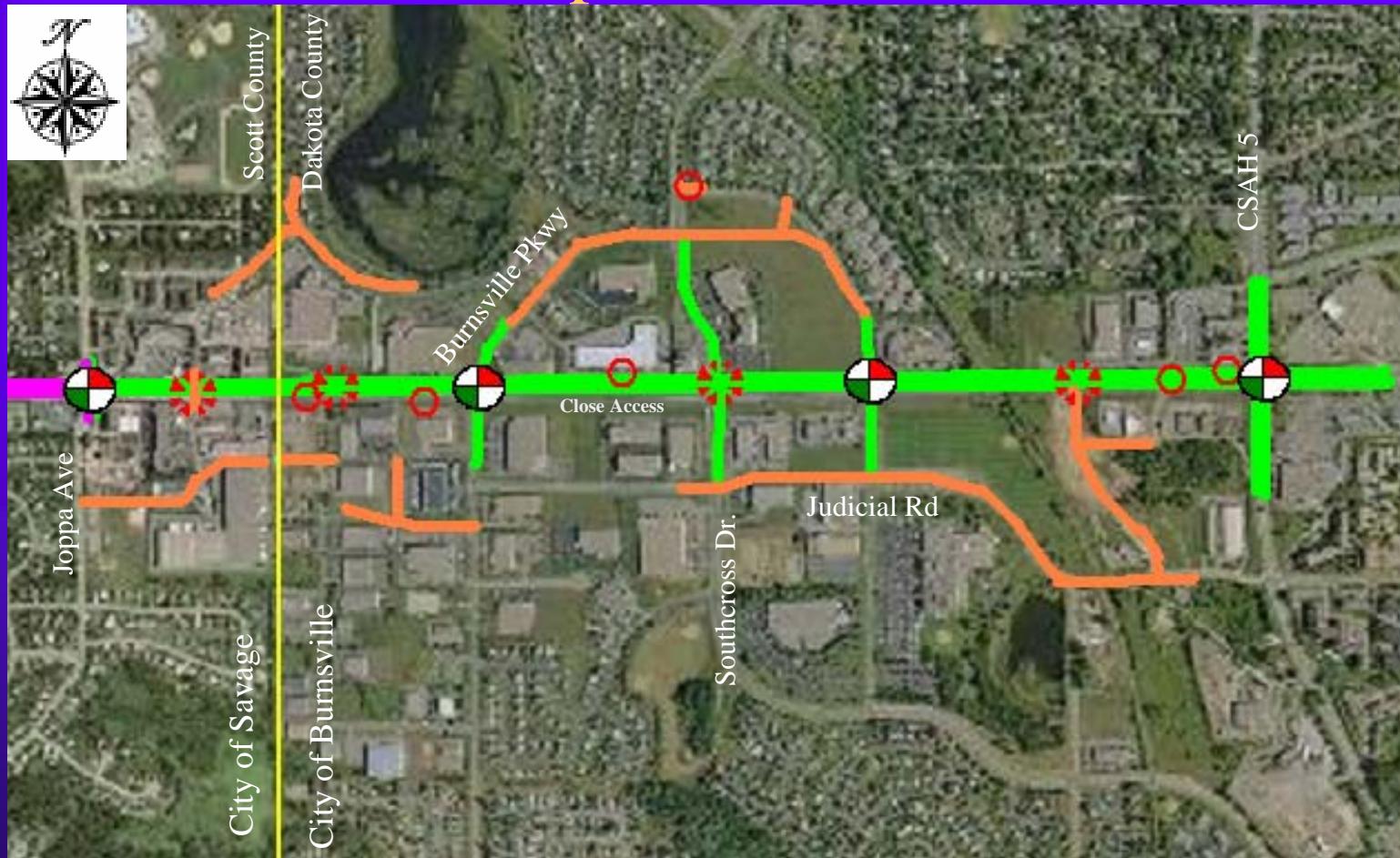
Highway 42 Corridor Study

Existing Conditions

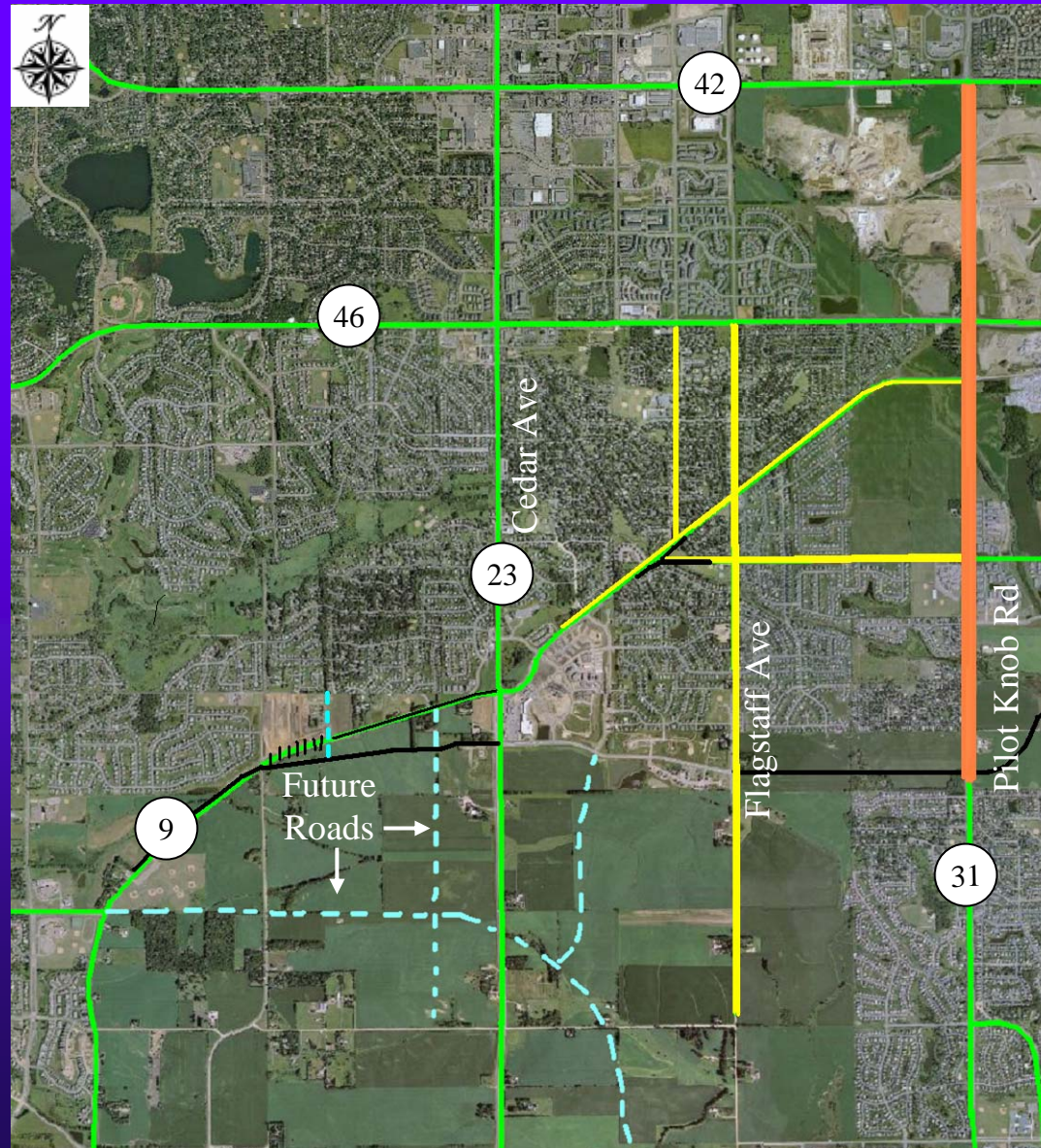


Highway 42 Corridor Study

Proposed Plan

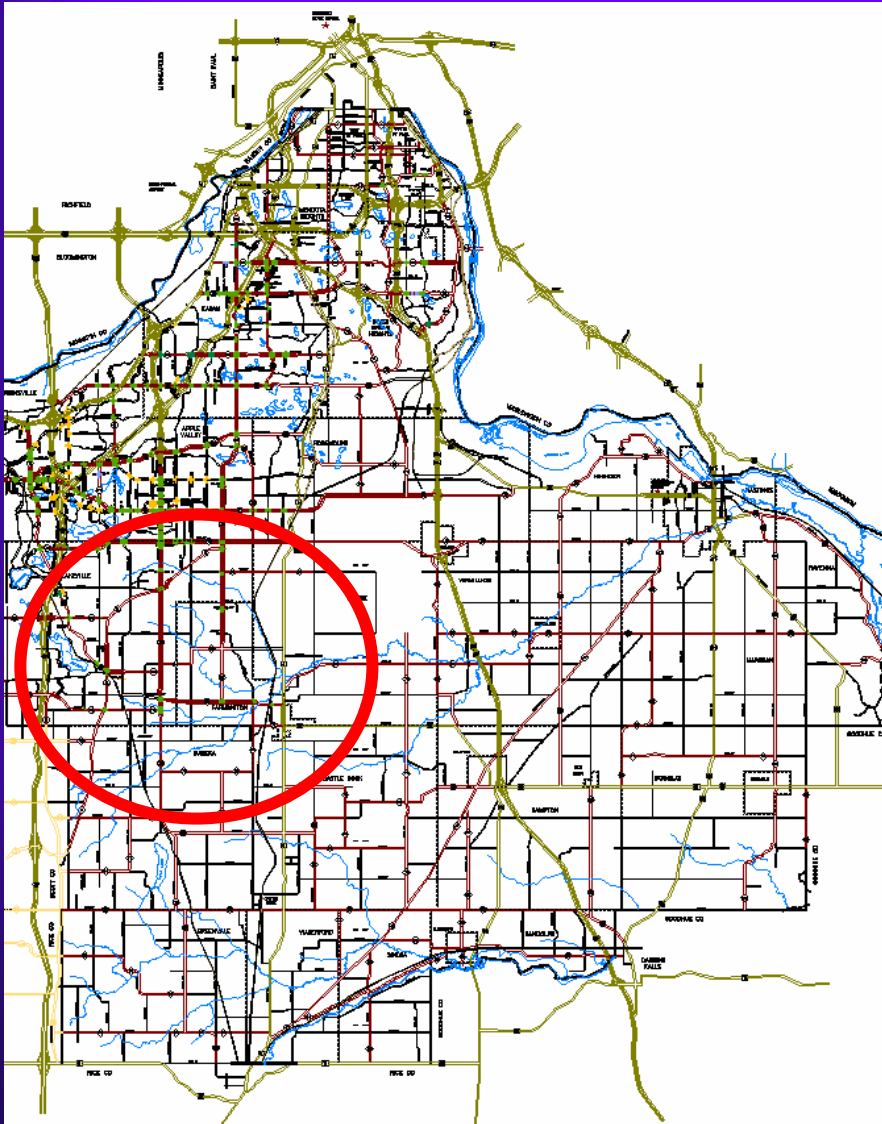


Pilot Knob Corridor Study

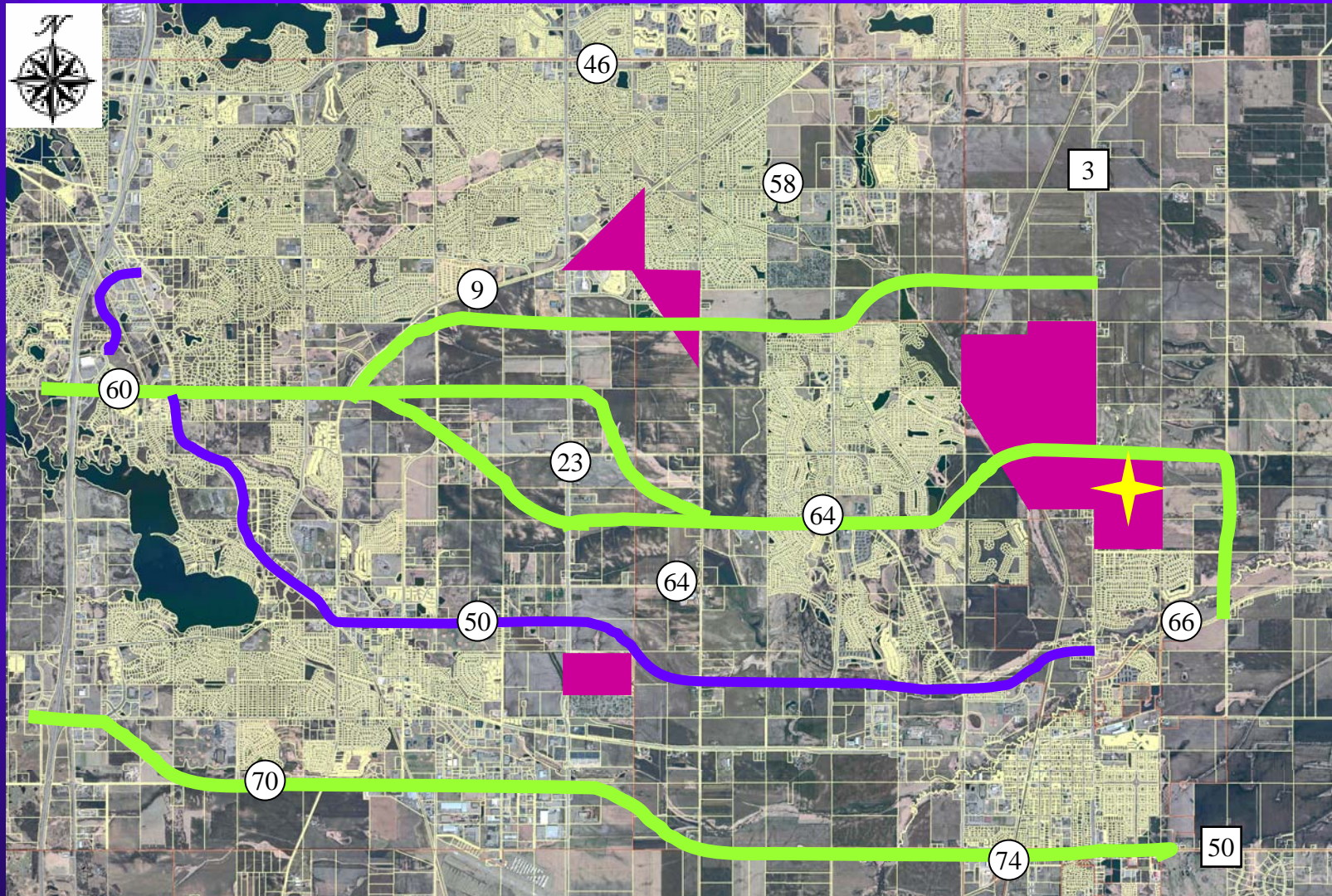


East/West Corridor Study

- ◆ Location of East/West preservation study



East/West Corridor Study



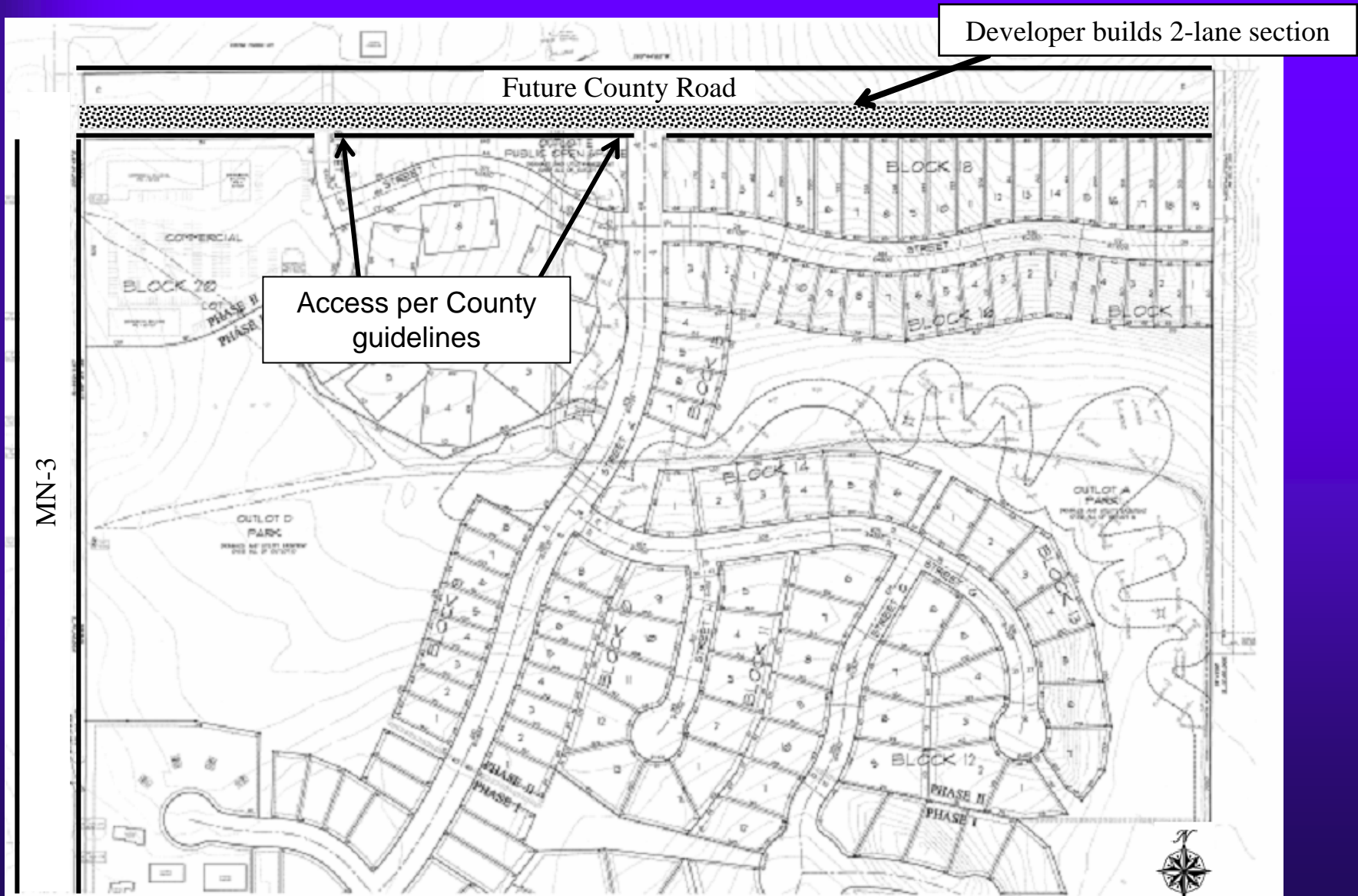
Future County Road

Future Local Road

Recent Plats

Recent Plats

East/West Corridor Study





Summary

- ◆ The “key” to implementing an access management plan
 - Statues - Ordinances
 - Transportation plan - Provide strategies
 - Studies and implementation plan for future



Unlocks a highway system that
accommodates development and
operates in a safe efficient manner

Kristi.Sebastian@co.dakota.mn.us

www.dakotacounty.us