



**TRANSPORTATION RESEARCH BOARD**

*OF THE NATIONAL ACADEMIES*

# **NATIONAL ROUNDABOUT CONFERENCE**

## **Final Program**



**The Westin Crown Center  
Kansas City, Missouri**

**Sunday, May 18 – Wednesday, May 21, 2008**

# **2008 National Roundabout Conference Planning Committee**

Eugene R. Russell, Sr., Chair  
Robert Alva  
Stephen Bass  
Norman Beeman  
Lynn Berges  
Mac Finley  
Steve King

Cheryl Lambrecht  
David LaRoche  
Paula Parke  
Brian Shields  
Linda Voss  
Michael Wahlstedt  
Mohsin Zaidi

## **Sponsors**

Transportation Research Board  
Missouri Department of Transportation  
Kansas Department of Transportation  
Kansas State University, University Transportation Center  
Federal Highway Administration  
City of Overland Park, Kansas

## **Task Force on Roundabouts**

Eugene R. Russell, Sr., Chair  
Marcus A. Brewer, Secretary  
Joe G. Bared  
Janet Barlow  
Leanna Marie Belluz  
James O. Brewer  
Werner Brilon  
Dennis M. Cannon  
Philip B. Demosthenes  
Mark A. Doctor  
Lukas Franck  
Fred R. Hanscom  
Vaughan W. Inman  
Hillary Nicole Isebrands

Srinivas Mandavilli  
Howard M. McCulloch  
Andrew P. O'Brien  
Anna R. Okola  
Walter L. Pribble  
Richard A. Retting  
Bruce Wayne Robinson  
Lee A. Rodegerdts  
Bastian J. Schroeder  
Ken Sides  
Rod J. Troutbeck  
Brian J. Walsh  
David E. Woosley

### ***Front Cover Photos***

110th Street and Lamar Avenue  
Overland Park, KS

Santa Fe Drive and Conser Street  
Overland Park, KS

# Exhibitors

## **American Concrete Pavement Association**

Scott Haislip  
5420 Old Orchard Blvd  
Skokie, IL 60077  
[shaislip@aol.com](mailto:shaislip@aol.com)

Founded in 1964, ACPA is a premier national association representing the concrete pavement industry. Our mission is to make portland cement concrete the material of choice for airports, highways, and streets & roads pavements.

## **American Public Works Association**

Patty Mahan  
2345 Grand Boulevard, Ste 700  
Kansas City, MO 64108  
[pmahan@apwa.net](mailto:pmahan@apwa.net)

The American Public Works Association is an international educational and professional association whose members include public works directors, engineers, street superintendents, fleet managers, city managers, public utility managers, community development/planning managers, facilities/grounds managers and representatives from the corporations providing products or services to those professionals.

## **DLZ Michigan, Inc.**

Metzer Stephen  
1425 Keystone Avenue  
Lansing, MI 48911  
[kreyes@dlz.com](mailto:kreyes@dlz.com)

DLZ has been a leader in America's 'Roundabout Revolution' with hundreds of roundabout designs since the 1990s. We specialize in high capacity roundabouts and complex problem intersections. We are proud to be one of the nation's most experienced roundabout firms - please stop by and talk with our staff members.

## **Ennis Paint, Inc.**

Travis Hansen  
7908 Fern Drive  
Meriden, KS 66512  
[travis@ennispaint.net](mailto:travis@ennispaint.net)

Ennis Paint is the world's largest pavement manufacturer specializing in waterborne and solvent-based traffic paint, thermoplastic, preformed thermoplastic, epoxy, modified urethane, poly-urea, and methacrylates. Ennis Paint participates in all road-marking markets. We can satisfy all of your road-marking needs with industry-leading service and safety solutions quality.

**Integrated Paving Concepts**

Liz Barber  
102 17957 55 Avenue  
Surrey, BC V3S 6C4  
Canada  
[liz.barber@streetprint.com](mailto:liz.barber@streetprint.com)

IPC Asphalt Surfacing Solutions: StreetPrint, DuraTherm.

**O'Brien Traffic**

Andrew O'Brien  
22 Gillman Street, Suite 2  
Hawthorn 3123  
[andrew@obrientraffic.com](mailto:andrew@obrientraffic.com)

O'Brien Traffic of Melbourne Australia (or its Principal) has been actively designing roundabouts for nearly 30 years. It also has provided advice to US designers including for the earliest modern roundabouts in the US (e.g. Long Beach, Summerlin, Towson). The exhibit will offer active on-site design and review services.

**Ourston Roundabout Engineering Inc.**

Mark Lenters  
5325 Wall Street, Suite 2305  
Madison, WI 53718  
[mlenters@ourston.com](mailto:mlenters@ourston.com)

Ourston Roundabout Engineering Inc. (ORE) is a corporation wholly dedicated to roundabout engineering in North America. We led the Roundabout Revolution with several notable accomplishments:

- America's first two modern roundabouts
- Maryland's first modern roundabouts
- The first three roundabout interchanges
- America's first three modern roundabouts to replace traffic signals

**PTV America, Inc.**

Cassandra Rugh  
1128 NE 2nd Street, Suite 204  
Corvallis, OR 97330  
[crugh@ptvamerica.com](mailto:crugh@ptvamerica.com)

PTV America, a subsidiary of PTV AG in Karlsruhe, Germany, is a transportation software and consulting firm. PTV America is the North American distributor of traffic applications PTV Vision® software suite (VISSIM and VISUM) and VISUM Online and provides technical support, software customization and training for these products.

**Reid Middleton, Inc.**

Alain Calle  
728 134th Street SW, Suite 200  
Everett, WA 98204-5322  
[acalle@reidmiddleton.com](mailto:acalle@reidmiddleton.com)

Reid Middleton will be exhibiting information regarding our roundabout services, which include design, full PS&E, feasibility analysis, PS&E assistance, peer review, public outreach, and roundabout design classes.

**SEH/RTE**

Todd Sanders  
425 W. Water Street  
Appleton, WI 54169  
[tsanders@sehinc.com](mailto:tsanders@sehinc.com)

The SEH and RTE team provide full-service roundabout solutions from simple to complex. RTE, recognized nationally for nearly 300 roundabout designs, and SEH, an engineering and architecture firm, together provide a comprehensive approach, which includes: traffic analysis, traffic engineering and planning, right-of-way, infrastructure, landscape architecture, public involvement, and construction management.

**SIDRA SOLUTIONS**

Rahmi Akcelik  
P.O. Box 1075G  
Greythorn Victoria 3104  
Australia  
[rahmi.akcelik@sidrasolutions.com](mailto:rahmi.akcelik@sidrasolutions.com)

SIDRA INTERSECTION is the popular micro-analytical software for roundabouts, signals and sign-control used at about 1000 sites in the USA (over 2300 sites worldwide). SIDRA TRIP is a micro-simulation model for assessing travel level of service, performance, operating cost, fuel consumption, emissions and noise.

**Traffic Sign Solutions Inc.**

Eric Woodhouse  
1000 N. West Street, Suite 1200  
Wilmington DE 19801  
[eric.woodhouse@trafficsignsolutions.com](mailto:eric.woodhouse@trafficsignsolutions.com)

With the introduction of new roundabouts to North America, TSS is positioned to provide users with effective sign solutions. We have the benefit of many years of international experience, and look forward to sharing a successful and respected record with the traffic management community in North America.

~ This page was left intentionally blank ~

## PRELIMINARY PROGRAM

### TRB NATIONAL ROUNDABOUT CONFERENCE

Sunday, May 18 – Wednesday, May 21, 2008

#### SUNDAY, MAY 18, 2008

**11:00 A.M. - 5:00 P.M.**      **REGISTRATION**      **Century Foyer**

**1:00 P.M. - 5:00 P.M.**      **WORLDWIDE ROUNDABOUTS**      **Century A**  
Mike Wahlstedt, Transystems, Moderator

*USA Overview:* Lee Rodegerdts, Kittelson & Associates, Inc.

*Australia:* Rahmi Akcelik

*Canada:* Leanna Belluz

*France:* Bernard Guichet

*Germany:* Werner Brilon

*United Kingdom:* Janet Kennedy

*Question and Answer:* Audience

**5:30 P.M. - 7:30 P.M.**      **WELCOMING RECEPTION WITH EXHIBITS**      **Century B**

#### MONDAY, MAY 19, 2008

**7:00 A.M. - 5:00 P.M.**      **REGISTRATION**      **Century Foyer**

**8:00 A.M. - 9:15 A.M.**      **SESSION 1: PLENARY SESSION**      **Century A**  
Gene Russell, Kansas State University Moderator

*Welcome:* Councilman Russ Johnson, Kansas City, Missouri

*Welcome & Remarks:* Debra L. Miller, Secretary of Transportation,  
Kansas Department of Transportation & Chair, Executive Committee,  
Transportation Research Board

*Welcome & Remarks:* Don Hillis, Director of System Management, Missouri  
Department of Transportation

*Keynote Address:* **WHY I CHANGED MY MIND AND PROMOTE  
ROUNDABOUTS**

Ken Johnson, former Mayor, Carthage, Missouri

10:00 A.M. – NOON

**SESSION 2A**  
**Pershing North**

---

**MODELING: KEY PARAMETERS AND MODEL COMPARISONS**

Srinivas Mandavilli, Insurance Institute for Highway Safety, Moderator

**The Relationship between Traffic Parameters and Microsimulation Models**

Rahmi Akcelik, SIDRA Solutions

**Modeling Roundabouts: Lessons Learned in Idaho**

Ryan Peterson, Project Engineering Consultants, Ltd.

**Capacity of Three-Lane Roundabouts Using VISSIM**

Joe Bared and Tommy Kim, Federal Highway Administration

**Roundabout Intersections: Evaluation of Geometric and Behavioral Features with VISSIM**

Rosolino Vaiano and Vincenzo Gallelli  
University of Calabria, Italy

**Using VISSIM to Model Roundabouts in a Roadway System**

Joshua Scott, Missouri Department of Transportation

**NOON - 1:00 P.M.**

**LUNCH WITH EXHIBITS**

**Century B**

**NOON - 5:00 P.M.**

**EXHIBITS OPEN**

**Century B**

**1:00 P.M. - 3:00 P.M.**

**SESSION 3A**  
**Pershing North**

---

**ROUNABOUT CAPACITY ANALYSIS, AND PERFORMANCE**

Lee Rodegerdts, Kittelson & Associates, Inc., Moderator

**Analysis of Small Roundabouts' Capacity**

Marian Tracz, Krakow University of Technology

**SESSION 3B**  
**Century A**

---

**KEYS TO GOOD ROUNABOUT DESIGN AND IMPLEMENTATION**

Ed Myers, Kittelson & Associates, Inc., Moderator

**Thinking Through a Roundabout Design**

Scott Ritchie, Roundabouts & Traffic Engineering



NATIONAL ROUNDABOUT CONFERENCE  
Sunday, May 18 – Wednesday, May 21, 2008

---

Session 3A continued

**An Investigation of the Performance of Roundabouts with Signals**  
Rahmi Akcelik, SIDRA Solutions

**Automated Capturing of Roundabout Turning Movement Counts**  
Robert Rescot, The University of Kansas

**Updated Roundabout Analysis Procedures for the Next Highway Capacity Manual**  
Lee Rodegerdts, Kittelson & Associates, Inc

Session 3B continued

**The Roundabout Design Process - Simplified**  
Howard McCulloch, New York State Department of Transportation

**Roundabout Capacity Analysis – A Practitioners Guide to Managing and Minimizing Risk and Uncertainty**  
Wes Butch, DLZ National, Inc.

**Design, Construction and Effectiveness of Two Mini-Roundabouts**  
Dan Dovey, King County Department of Transportation

**Preparing Roundabout Plan Sets**  
Rachel Price, Reid Middleton Inc.

**1:00 P.M. - 5:00 P.M.**

**FIELD WORKSHOP** 

***Techniques and Cues Used by Pedestrians Who are Blind***

**(advance registration and \$35.00 fee required) SOLD OUT**

Janet Barlow, Accessible Design for the Blind, Workshop Leader  
Registrants meet at 1:00 PM in Pershing East

**1:00 P.M. - 5:00 P.M.**

**POSTER SESSION I**

**Century B**

**Development of Kansas Roundabouts in the Kansas City Metropolitan Area**  
Lisa Stupps, Missouri Department of Transportation

**Framework for Assessing Locations for Roundabout Installation**  
David Stanek, Fehr & Peers

**Roundabouts and Emergency Evacuation**  
Ken Sides, City of Clearwater

**Roundabouts and Climate Change**  
Ken Sides, City of Clearwater

**A Closer Look at Driver Yielding Behavior at Roundabout Pedestrian Crossings**  
Bastian Schroeder, North Carolina State University

NATIONAL ROUNDABOUT CONFERENCE  
Sunday, May 18 – Wednesday, May 21, 2008

---

***Poster Session I – continued***

**Light Rail and Roundabout in Salt Lake City – Video and Design Details**  
Bill Baranowski, Roundabouts USA

**3:00 P.M. - 3:30 P.M.**

**BREAK WITH EXHIBITS**

**Century B**

**3:30 P.M. - 5:00 P.M.**

**SESSION 4A**  
**Century A**

---

**DESIGN GUIDES AND STANDARDS**

Mark Doctor, Federal Highway Administration,  
Moderator

**Roundabout Design Guides in Practice**

Scott Ritchie, Roundabouts & Traffic  
Engineering

**The FHWA Informational Guide Update: Status**

Justin Bansen, Kittelson & Associates, Inc.

**Development of Roundabout Application Guidelines  
for Ada County, Idaho**

Kent Fugal, Project Engineering Consultants,  
Ltd.

**New UK Design Standards for Roundabouts and  
Mini-Roundabouts**

Janet Kennedy, Transportation Research  
Laboratory (TRL), England

**SESSION 4B**  
**Pershing North**

---

**COMPARISON AND SELECTION OF  
INTERSECTION TRAFFIC CONTROL  
ALTERNATIVES**

Richard Retting, Insurance Institute for Highway  
Safety, Moderator

**Waterloo's Regional Roundabout Policy and  
Intersection Control Study Process**

Phil Weber, Ourston Roundabout Engineering,  
Inc.

**Comparative Evaluation of Roundabouts with other  
Intersection Control Methods in the Island of  
Jamaica**

Janine Dawkins, Ministry of Housing,  
Transport, Water and Works, Jamaica

**Multi-Criteria Approach for Selecting Roundabouts  
Locations**

R.F. Benekohal and Varun Alturi, University  
of Illinois at Urbana-Champaign

**An Evaluation of Missed Opportunity at 10  
Signalized Intersections**

Richard Retting, Insurance Institute for  
Highway Safety

**7:00 P.M. - 9:30 P.M.**

**ROUNDABOUT TASK FORCE (ANB75T) MEETING**

**Shawnee**

***Dinner on Your Own***

**TUESDAY, MAY 20, 2008**

**7:00 A.M. - 5:00 P.M.**      **REGISTRATION**      **Century Foyer**

**7:00 A.M. - 8:00 A.M.**      **CONTINENTAL BREAKFAST**      **Century Foyer**

**8:00 A.M. - 10:00 A.M.**

**SESSION 5A**  
**Pershing North**

---

**WORLDWIDE ROUNABOUT SAFETY**  
Edward Stolof, Institute of Transportation  
Engineers, Moderator

**Crash Patterns Occurring at a Large Sample of  
Roundabouts in Maryland**  
Srinivas Mandavilli, Insurance Institute for  
Highway Safety

**Lessons Resulting from 18,000 Personal Injuries at  
French Roundabouts**  
Bernard Guichet, CETE de l'Ouest, France.

**A Study of the Applicability of Roundabouts to the  
Japanese Road Network**  
Hideki Nakamura, Nagoya University,  
Nagoya, Japan.

**A Low-Tech Approach to Road Safety Engineering  
in Urban Areas**  
Clive Sawers, Moor Value Ltd.

**Mitigating Truck Rollovers: Approaches for  
Circulating Roadway Crown**  
Michael A Gingrich, Sr. and Edmund Waddell,  
Ourston Roundabout Engineering, Inc.

**SESSION 5B**  
**Century A**

---

**MODELING FOR CAPACITY AND DESIGN:  
COMPARISON AND DISCUSSION OF AVAILABLE  
TOOLS**  
Phil Demosthenes, Parametrix, Inc, Moderator


**Research for Development of RODEL, Version 2**  
Mark Johnson, MTJ Engineering, LLC

**Issues with Roundabout Capacity Software**  
Howard McCulloch, New York State  
Department of Transportation

**Approaches to Modeling Complicated Roundabout  
Scenarios**  
Ravi Ambadipudi, Burgess and Niple, Inc.

**Comparison of Micro-simulation Results with  
Observed Traffic Behavior at a Roundabout**  
Stephen Keen, Totten Sims Hubicki Associates

**Questions and Discussion**  
Audience and Presenters

**8:00 A.M. - NOON**      **ROUNABOUT TOUR**   
*A Guided Tour of Several Kansas City Area Roundabouts*  
Tour Leader: Cheryl Lambrecht, and Steve Bass, Kansas Department of  
Transportation  
**(advance registration and \$35.00 fee required for attendees only) SOLD OUT**  
Shuttle departs at 8:05 A.M. from hotel lobby

**NATIONAL ROUNDABOUT CONFERENCE**  
**Sunday, May 18 – Wednesday, May 21, 2008**

---

**8:00 A.M. - NOON**

**POSTER SESSION II**

**Century B**

**Status of Roundabouts in North America**

Lee Rodegerdts, Kittelson and Associates, Inc.

**Raised Crosswalks at Roundabouts – Poster Session**

Bill Baranowski, Roundabouts USA

**The Effects of Pedestrian Signals at Multi-lane Roundabouts,**

Benjamin Waldman, LSC Transportation Consultants, Inc.

**Anatomy of Education and Outreach to Inform Elected Officials, Community Leaders and Citizens**

Brian Barnett, City of Springfield

**Comparison of Corridor Operation and Safety with Traffic Signals vs. Roundabouts at Two Intersections: A Case Study**

Kelli Owen, Reid Middleton

**Raised Crosswalks at Roundabouts: Where are they Applicable?**

Bill Baranowski, Roundabouts USA

**8:00 A.M. - 1:00 P.M.**

**EXHIBITS OPEN**

**Century B**

**10:00 A.M. - 10:30 A.M.**

**BREAK WITH EXHIBITS**

**Century B**

**10:30 A.M. – NOON**

**SESSION 6A**  
**Pershing North**

---

**ROUNDABOUTS AND PEDESTRIANS: WHAT CONSTITUTES “ACCESSIBILITY?”**

Ronald Hughes, North Carolina State University  
Moderator

*Presentations and discussion will focus on a quantifiable definition of “accessibility” and means to obtain it. The panel will discuss recent data from NCHRP 3-78A and the use of VISSIM to analyze specific treatments such as, proximal and distal crosswalks and the HAWK pedestrian beacon.*

**SESSION 6B**  
**Century A**

---

**SIGNING MARKING AND DESIGN FOR EFFICIENT OPERATION AND SAFETY**

Ken Sides, City of Clearwater, Moderator

**Human Factors Laboratory Testing of Roundabout Traffic Control Devices for the 2009 MUTCD**

Fred Hanscom, Transportation Research Corporation

**Signing Issues Faced During Adoption and Evaluation of Roundabouts in Missouri**

Thomas Honich, Missouri Department of Transportation

**NATIONAL ROUNABOUT CONFERENCE**  
**Sunday, May 18 – Wednesday, May 21, 2008**

---

**Session 6A continued**

**Panel Discussion**

Ronald Hughes, North Carolina State University; Vaughn Inman, SAIC; and Bastian Schroeder, Institute for Transportation Research & Education

**Session 6B continued**

**Road Markings to Increase Roundabout Lane Utilization and Safety in Cyprus**

Alex Avgoustis, Ministry of Communications and Works, Republic of Cyprus

**Experience with Turbo – Roundabouts in Germany**

Werner Brilon, Ruhr-Universitatatsstrase, Germany

**NOON - 1:00 P.M.**

**LUNCH WITH EXHIBITS**

**Century B**

**1:00 P.M. - 3:00 P.M.**

**SESSION 7A**

**Pershing North**

**PUBLIC RELATIONS AND OUTREACH I, PROGRAM NEEDS & DEVELOPMENT**

Brian Shields, City of Overland Park, Moderator

**SESSION 7B**

**Pershing East**

**USA STATES' PART I: STATUS AND PROGRESS**

Mac Finley, Missouri Department of Transportation, Moderator

**SESSION 7C**

**Century A**

**CONSTRUCTION, RECONSTRUCTION AND DESIGN DETAILS**

Fred Hanscom, Transportation Research Corporation, Moderator

**Panel Discussion**

Mark Lenters, Ourston Roundabout Engineering, Inc.

Theron Knouse, Virginia Department of Transportation

Steve Porter, Missouri Department of Transportation

Roger Henderson, Kimley-Horn

**Maryland, Early Years and Program Growth**

Edward Myers, Kittelson & Associates, Inc.

**Challenges of First Roundabout on a State Highway System**

Patricia Walsh Burke, Stahly Engineering & Associates

**MoDOT Roundabouts in the Kansas City Metropolitan Area**

Lisa Stupps, Missouri Department of Transportation

**Construction of a Concrete Roundabout in a Major City Environment**

Bruce Wacker, City of Overland Park

**Defining the Stages of Roundabout Plan Detail**

Todd Sanders, Short Elliott Hendrickson; and Scott Ritchie, Roundabouts & Traffic Engineering

**Project Constraints and Design Considerations to Modify Grading of an Existing Roundabout**

Troy Pankratz, Ourston Roundabouts Engineering, Inc.

Session 7B - continued

**Roundabouts in the Show Me State; An Overview**

Mac Finley, Missouri  
Department of  
Transportation

Session 7C continued

**Rehabilitating Failed Roundabouts**

Mark Lenters, Ourston  
Roundabout Engineering Inc.

**Design for Single-lane to Dual-lane Roundabout Expandability**

Kent Fugal, Project  
Engineering Consultants, Ltd.

3:00 P.M. - 3:30 P.M.

**BREAK**

Century Foyer

3:30 P.M. - 5:00 P.M.

**SESSION 8A**

**Century A**

**PUBLIC RELATIONS AND OUTREACH II, EXAMPLES/CASE STUDIES**  
Brian Walsh, Washington  
Department of  
Transportation, Moderator

**Panel Discussion**

Brian Walsh, Washington  
State Department of  
Transportation

Kelli Owen, Reid  
Middleton

Keith Boddy,  
Transportation & Public  
Works, Canada

James Krzeminski, HDR  
Engineering

Martina Wilkinson &  
Kyle Arend, Larimer  
County Engineering  
Department

**SESSION 8B**

**Perishing North**

**USA STATES' PART II: CHALLENGES**

Aimee Flannery, George Mason  
University, Moderator

**Safety of Roundabouts on High-Speed State Highways**

Hillary Isebrands, Iowa State  
University

**High Speed Approaches at Roundabouts; 2008 Update**

Scott Ritchie, Roundabouts &  
Traffic Engineering

**Roundabouts at Diamond Interchanges**

Ray Shank, Missouri  
Department of  
Transportation

**SESSION 8C**

**Pershing East**

**RAIL AND BICYCLE SAFETY AT ROUNDABOUTS**

Marcus Brewer, Texas  
Transportation Institute,  
Moderator

**Roundabouts near Railway Level Crossings: A French National Study**

Bernard Guichet, CETE de  
l'Quest, France

**Roundabouts near Railroad Crossings**

Alex Ariniello, LSC  
Transportation Consultants,  
Inc.

**Operation of a Light Rail and Roundabout Intersection in Salt Lake City, Utah**

Bill Baranowski,  
Roundabouts USA

Session 8B - continued

**Appropriate Measures for  
 Accommodating Trucks on  
 Multilane Roundabouts**  
 Michael A. Gingrich, Sr., and  
 Edmund Waddell, Ourston  
 Roundabout Engineering, Inc.

Session 8C - continued

**Roundabouts and Safety for  
 Bicyclists: Empirical Results  
 about the Influence of Different  
 Bicyclist Facility Designs**  
 Stijn Daniels, Hasselt  
 University, Belgium

**6:00 P.M. - 9:00 P.M.**

**EVENING AT THE WWI MEMORIAL RECEPTION **

**Ticket required, advanced registration requested**

**The National World War I Museum at Liberty Memorial** is the only one of its kind in the USA. The Museum has received rave reviews since its opening last year. Conference attendees are welcome to visit and tour the museum and its exhibits between 6:30pm–8:30pm. Casual Attire is appropriate for this barbeque themed evening. Cash bar will provide beer and wine, soft drinks are complimentary.

*Additional tickets may be purchased for spouses and guests. Tickets are included with conference registration if requested.*

\*Walk across the street to Liberty Memorial, limited shuttle service will be available.

**WEDNESDAY, MAY 21, 2008**

**7:00 A.M. - 7:30 A.M.**

**CONTINENTAL BREAKFAST**

Century Foyer

**7:30 A.M. - 9:00 A.M.**

**SESSION 9A**  
**Pershing North**

---

**ROUNABOUT  
 ACCESSIBILITY, ACCESS  
 BOARD STANDARDS,  
 RESEARCH AND  
 APPLICABILITY**  
 Lois Thibault, US Access  
 Board, Moderator

**Access to Roundabout  
 Intersections by Persons who  
 are Blind**  
 Richard Long, Western  
 Michigan University

**SESSION 9B**  
**Century C**

---

**ENSURING GOOD  
 ROUNABOUT DESIGN:  
 REVIEW AND EVALUATION**  
 Norm Beeman, Missouri  
 Department of Transportation,  
 Moderator

**The Need for Peer Review of  
 Roundabouts**  
 Patrick McGrady, Reid  
 Middleton

**SESSION 9C**  
**Pershing East**

---

**COMMUNITY ACCEPTANCE OF  
 ROUNABOUTS: INCLUDING  
 OLDER USERS AND SCHOOLS**  
 Mohsin Zaidi Public Works  
 Department, Kansas City,  
 Missouri, Moderator

**Community Surveys Results of  
 Roundabout Growth in Olathe,  
 KS**  
 Alonzo Linan, City of Olathe

**NATIONAL ROUNDABOUT CONFERENCE**  
**Sunday, May 18 – Wednesday, May 21, 2008**

---

**Session 9A-continued**

**An Update On NCHRP 3-78A:  
Treatments for Channelized  
Turn Lanes and Single and  
Multi-Lane Roundabouts**  
Ronald Hughes, North  
Carolina State University

**An Overview of the History,  
Supporting Research and  
Human Factors Issues Behind  
the US Access Board's  
Accessibility Standards for  
Roundabouts**  
Lois Thibault, U.S. Access  
Board

**Open Discussion of  
Opportunities for Industry  
Comment to the Access Board  
Docket on Final Rule, expected  
in 2008**  
Lois Thibault, U.S. Access  
Board; and Audience

**Session 9B-continued**

**Effectiveness of Roundabout Peer  
Review**  
Todd Sanders, Short Elliott  
Hendrickson and Scott  
Ritchie Roundabouts &  
Traffic Engineering

**Comprehensive Roundabout  
Review Submission Package**  
Michael A. Gingrich Sr.,  
Ourston Roundabout  
Engineering, Inc.

**Fastest Path Modeling: Design  
Practice vs. Field Evaluation of  
Constructed Conditions**  
James Knostman, City of  
Loveland

**Session 9C-continued**

**Roundabouts Near Schools –  
Are They Desirable?**  
Ken Sides, City of  
Clearwater, Florida

**Convincing Parents that a  
School Roundabout is Safe**  
Brian Shields, City of  
Overland Park

**Older Users and Roundabouts**  
Ken Sides, Sr., City of  
Clearwater

**9:00 A.M. - 9:30 A.M.**

***BREAK***

**Century Foyer**

**9:30 A.M. - 11:15 A.M.**

**SESSION 10: CLOSING SESSION, TOWN HALL ROUNDABOUT FORUM  
Century C**

Gene Russell, Kansas State University, Moderator

Marcus Brewer, Texas Transportation Institute, Coordinator/Recorder

A Discussion of Separating Local, Irrational Opposition and Myths from  
Factual Roundabout Pro and Con Issues

Discussion Leaders: Brian Walsh, Washington Department of Transportation;  
Alonzo Linan, City of Olathe; Brian Shields, City of Overland Park; Ken  
Sides, City of Clearwater; Philip Demosthenes, Parametrix, Inc.; and Mohsin  
Zaidi, Public Works Department, Kansas City, MO



**NATIONAL ROUNDABOUT CONFERENCE**  
**Sunday, May 18 – Wednesday, May 21, 2008**

---

Format: Groups of 8 to 10 will discuss the topic and suggest and rank processes to best address this issue, and this will form the basis for a Forum Final Report on the forums' collective consensus on proper processes and programs to educate about the proper place of roundabouts as a tool for intersection safety and efficiency.

**CLOSING COMMENTS & ADJOURN**

Gene Russell, Kansas State University

Richard F. Pain, Transportation Research Board

**NOTES**

Ruled lines for taking notes.





**ATTENDEE LIST**

**Kenneth Ackerman**

Harper Houf Peterson Righellis Inc.  
kena@hhpr.com

**Rahmi Akcelik**

Akcelik & Associates (SIDRA SOLUTIONS)  
rahmi.akcelik@sidrasolutions.com

**Riad Akileh**

SIDRA SOLUTIONS (Context Sensitive Solutions, Inc.) CH2M HILL  
cssi@tampabay.rr.com dbaah@ch2m.com

**Brian Aldridge**

ENTRAN  
baldridge@entran.us

**Mark Alisesky**

Michael Baker Jr., Inc.  
malisesky@mbakercorp.com

**Bob Alva**

FHWA-KS  
Robert.Alva@fhwa.dot.gov

**Ravi Ambadipudi**

Burgess and Niple Inc  
rambadipudi@burnip.com

**Frank Aransky**

American Structurepoint, Inc.  
faransky@structurepoint.com

**Kyle Arend**

Larimer County  
karend@larimer.org

**Alex Ariniello**

LSC Transportation Consultants Inc.  
aja@lscdenver.com

**Bob Arseneau**

City of Madison  
barseneau@cityofmadison.com

**Andrew Arseneault**

Jacobs Engineering  
andrew.arseneault@jacobs.com

**Varun Atluri**

University of Illinois  
vatlur2@uiuc.edu

**Alex Avgoustis**

Ministry of Communications and Works, Cyprus  
avgoustis@gmail.com

**Randa Awad**

Reid Middleton Inc.  
rawad@reidmidd.com

**Daniel Baah**

CH2M HILL  
dbaah@ch2m.com

**Greg Bachman**

Summit County Engineer  
jsigel@engineer.co.summit.oh.us

**Zachary Baker**

Affinis Corp  
zbaker@affinis.us

**Justin Bansen**

Kittelsohn & Associates, Inc.  
jbsansen@kittelsohn.com

**Bill Baranowski**

Roundabouts USA  
bbbara@msn.com

**Liz Barber**

Integrated Paving Concepts  
eric.oberhaus@streetprint.com

**Janet Barlow**

Accessible Design for the Blind  
jbarlow@accessforblind.org

**Brian Barnett**

City of Springfield  
bbarnett@ci.springfield.or.us

**Susan Barry**

Missouri DOT  
Susan.Barry@modot.mo.gov

**Stephen Bass**

Kansas DOT  
sbass@ksdot.org

**Marco Bassani**

Politecnico di Torino  
marco.bassani@polito.it

**NATIONAL ROUNDBOUT CONFERENCE**  
**Sunday, May 18 – Wednesday, May 21, 2008**

---

**ATTENDEE LIST**

**Scott Batson**

Portland Office of Transportation  
Scott.Batson@pdxtrans.org

**Christopher Beard**

Crawford, Bunte, Brammeier  
cbeard@cbbtraffic.com

**John Bechtold**

Missouri DOT  
john.bechtold@modot.mo.gov

**Kevin Beck**

Cook, Flatt & Strobel Engineers, P.A.  
kbeck@cfse.com

**Nathan Becknell**

Garver Engineers  
nlbecknell@garverengineers.com

**Norman Beeman**

Missouri DOT  
norman.beeman@modot.mo.gov

**Danny Behl**

Missouri DOT  
danny.behl@modot.mo.gov

**Garson Bell**

Resolve Group  
garson.bell@resolvegroup.co.nz

**Leanna Belluz**

Transport Canada  
belluzl@tc.gc.ca

**Rahim Benekohal**

Univ of Illinois  
rbenekoh@uiuc.edu

**James Bentley**

Missouri DOT  
James.Bentley@modot.mo.gov

**Lynn Berges**

Kansas DOT  
LBerges@ksdot.org

**Pete Berry**

Missouri DOT  
pete.berry@modot.mo.gov

**Tim Blackburn**

Urban Systems Ltd.  
tblackburn@urban-systems.com

**Tom Blust**

Road Commission for Oakland County  
tblust@rcoc.org

**Keith Boddy**

Nova Scotia Department of Transportation and  
Infrastructure Renewal  
boddyke@gov.ns.ca

**Paul Boenisch**

Missouri DOT  
Paul.Boenisch@modot.mo.gov

**Tom Boyatt**

City of Springfield, Oregon  
tboyatt@ci.springfield.or.us

**Keith Bredehoeft**

City of Olathe  
kbredehoeft@olatheks.org

**Marcus Brewer**

Texas Transportation Institute  
m-brewer@tamu.edu

**Jason Bricker**

ENTRAN  
jbricker@entran.us

**Kevin Briggs**

Engineering Northwest Limited  
kbriggs@enl-tbay.com

**Werner Brilon**

Ruhr-University Bochum  
werner.brilon@rub.de

**Frank Broen**

Teach America  
fbroen@teachamerica.com

**Colleen Brown**

PENNDOT  
COLBROWN@state.pa.us

**Matt Brown**

A&F Engineering  
m\_brown@af-eng.com

**John Bruggeman**

University of Wisconsin-Milwaukee  
jb8@uwm.edu

**David Brunjes**

Missouri DOT  
david.brunjes@modot.mo.gov

**ATTENDEE LIST**

**Joe Bunker**

Strand Associates, Inc.  
joe.bunker@strand.com

**John Burnside**

Ins and Outs of Roundabouts  
roundabouts@sunset.net

**Jay Burress**

Shafer, Kline & Warren  
burress@skw-inc.com

**Wes Butch**

DLZ Michigan, Inc.  
wbutch@dlz.com

**Saulius Buteliauskas**

UAB Baltisches Haus  
saulius.buteliauskas@balthaus.eu

**Stanislovas Buteliauskas**

The General Jonas Zemaitis Military Academy of Lithuania TRB  
stasysbut@gmail.com

**DJ Buthe**

City of Sioux Falls, Engineering  
dbuthe@siouxfalls.org

**Aaron Call**

Burgess & Niple, Inc.  
acall@burnip.com

**Dan Carey**

Olsson Associates  
dcarey@oaconsulting.com

**Kaci Carlson**

Reid Middleton Inc.  
kcarlson@reidmidd.com

**Sandra Carpenter**

Graef, Anhalt, Schloemer & Assoc., Inc.  
sandra.carpenter@gasai.com

**John Casey**

Missouri DOT  
teresa.martin@modot.mo.gov

**Brian Cash**

ENTRAN  
bcash@entran.us

**Loren Chilson**

Fehr & Peers  
l.chilson@fehrandpeers.com

**Eric Christiansen**

Province of Manitoba  
echristiansen@gov.mb.ca

**Andrew Cibor**

Kittelson & Associates, Inc.  
acibor@kittelson.com

**Anita Clark**

Missouri DOT  
anita.clark@modot.mo.gov

**Linda Clark**

Missouri DOT  
linda.clark@modot.mo.gov

**Ryan Clark**

The Troyer Group, Inc.  
rjc@troyergroup.com

**Joanice Cole**

TRB  
jocole@nas.edu

**Jody Colvin**

LADOTD  
jodycolvin@dotd.la.gov

**William Conklin**

Ingham County Road Commission  
wconklin@inghamcrc.org

**Brian Coon**

Kansas State University  
bcoon@ksu.edu

**Stanley Craig**

Parametrix  
mcraig@parametrix.com

**Donald Crites**

Missouri DOT  
don.crites@modot.mo.gov

**Mike Croce**

Bergmann Associates  
mcroce@bergmannpc.com

**Barry Crown**

Rodel Inc  
rscrown@aol.com

**Mike Curtit**

Missouri DOT  
Michael.Curtit@modot.mo.gov

**NATIONAL ROUNDBOUT CONFERENCE**  
**Sunday, May 18 – Wednesday, May 21, 2008**

---

**ATTENDEE LIST**

**Brandon Daniel**

Missouri DOT  
Brandon.Daniel@modot.mo.gov

**Stijn Daniels**

Hasselt University - Belgium  
stijn.daniels@uhasselt.be

**Janine Dawkins**

Ministry of Transport & Works, Jamaica  
jdawkins@mtw.gov.jm

**Steve Dearing**

Orchard, Hiltz & McCliment, Inc.  
stephen.dearing@ohm-advisors.com

**Kathleen Deitering**

Kansas DOT  
deitering@ksdot.org

**Todd Delk**

Kimley-Horn and Associates  
todd.delk@kimley-horn.com

**Philip Demosthenes**

Parametrix Inc  
pdemosthenes@parametrix.com

**John Denholm**

Lee Engineering  
jdenholm@lee-eng.com

**Robert Destefano**

Franklin County Engineers  
BDestefano@franklincountyengineer.org

**Steven Diebol**

Metro Transportation Group, Inc.  
sad@metrotransportation.com

**Scott Diehl**

Urban Engineers  
sjdiehl@urbanengineers.com

**Josh Diekmann**

Parametrix  
jdiekmann@parametrix.com

**James Dippel**

Burgess & Niple, Inc.  
jdippel@burnip.com

**Sunanda Dissanayake**

Kansas State University  
sunanda@ksu.edu

**Mark Doctor**

FHWA Resource Center  
mark.doctor@dot.gov

**Dan Dovey**

King County Department of Transportation  
dan.dovey@kingcounty.gov

**Andrew Duerr**

Rummel, Klepper & Kahl, LLP  
aduerr@rkk.com

**Doug Duke**

Jacobs Carter Burgess  
lifejunk@hotmail.com

**Mark Durbahn**

Earth Tech  
mark.durbahn@earthtech.com

**Laura Ellen**

Missouri DOT  
laura.ellen@modot.mo.gov

**Matthew Enders**

Washington State DOT  
endersm@wsdot.wa.gov

**Jon Eshelman**

Traffic Engineering Consultants  
jeshelman@tecokc.com

**Thomas Evans**

Missouri DOT  
Thomas.Evans@modot.mo.gov

**Dennis Eyler**

SRF Consulting Group, Inc.  
deyler@srfconsulting.com

**Hilary Fellows**

Burns & McDonnell  
hfellows@burnsmcd.com

**Mac Finley**

Missouri DOT  
Mac.Finley@modot.mo.gov

**Aimee Flannery**

George Mason University  
aflanner@gmu.edu

**Patrick Fleming**

Wisconsin DOT  
patrick.fleming@dot.state.wi.us



**ATTENDEE LIST**

**Lambertus Fortuijn**

Delft University of Technology  
L.G.H.fortuijn@TUDelft.nl

**James Foster**

Mobile County Public Works  
jfoster@mobilecounty.net

**Todd Fredericksen**

Olsson Associates  
tfredericksen@oaconsulting.com

**Jason Frericks**

Foth Infrastructure & Environment, LLC  
jfrericks@foth.com

**Gerald Froese**

British Columbia Ministry of Transportation  
jerry.froese@gov.bc.ca

**Larry Frostad**

Washington State DOT  
frostal@wsdot.wa.gov

**Kent Fugal**

Project Engineering Consultants  
kent@pecidaho.com

**Theresa Gaisser**

PBS&J  
tgaisser@pbsj.com

**Vincenzo Gallelli**

University of Calabria  
vincenzo.gallelli@unical.it

**Steve Gault**

Traffic Planning and Design, Inc.  
sgault@trafficpd.com

**Haseeb Ghumman**

DLZ Indiana, LLC  
hghumman@dlz.com

**Karen Giese**

PTV America, Inc.  
kgiese@ptvamerica.com

**Michael Gingrich**

Ourston Roundabout Engineering  
mgingrich@ourston.com

**Mehrdad Givechi**

KU Transportation Center  
mgivechi@ku.edu

**Brian Gower**

Kansas DOT  
gower@ksdot.org

**Steve Grabill**

Ulteig Engineers, Inc.  
Steve.Grabill@ulteig.com

**Jeromy Grenard**

City of West Lafayette, Indiana  
grenard@gmail.com

**Michelle Gribler**

Transpo Group  
michelleg@thetranspogroup.com

**Bernard Guichet**

CETE de l'Ouest  
Bernard.Guichet@developpement-durable.gouv.fr

**Carmelo Gutierrez**

Krebs, LaSalle, LeMieux Consultatns, Inc.  
cgutierrez@kllconsultants.com

**Brian Hagerty**

Stantec Consulting Services, Inc.  
brian.hagerty@stantec.com

**Scott Haislip**

American Concrete Pavement Association  
shaislip@aol.com

**Steven Hamadi**

Wilbur Smith Associates  
shamadi@wilbursmith.com

**Hidekatsu Hamaoka**

Akita University  
hamaoka@ce.akita-u.ac.jp

**Fred Hanscom**

TRC  
Fred@trc-net.com

**Kendra Hansen**

Graef, Anhalt, Schloemer & Assoc., Inc.  
kendra.a.hansen@gasai.com

**Travis Hansen**

Ennis Paint, Inc.  
travis@ennispaint.net

**Mike Harmer**

PBS&J  
mharmer@pbsj.com

**ATTENDEE LIST**

**Chuck Harper**

Harper Houf Peterson Righellis Inc.  
chuck@hhpr.com

**Brian Harrington**

Allstate Consultants LLC  
bharrington@allstateconsultants.net

**Brian Harris**

Stantec Consulting Ltd  
brian.harris@stantec.com

**Lindsay Harris**

Missouri DOT  
Lindsay.Harris@modot.mo.gov

**David Harrison**

Road Commission for Oakland County  
dharrison@rcoc.org

**Charles Hart**

Hubbell Roth & Clark  
chart@hrc-engr.com

**Leslie Hart**

City of Cedar Rapids  
l.hart@cedar-rapids.org

**Steve Hartke**

Butler County Engineers  
hartkes@bceo.org

**Nevin Harwick**

Harwick Transportation Group  
nevin@harwicktg.com

**Peggy Hawley**

OMNNI Associates  
peggy.hawley@omni.com

**Cheryl Hendrixson**

Kansas DOT  
cherylh@ksdot.org

**Gail Hershey**

TranSystems  
gahershey@transystems.com

**Lyn Heying**

MECO Engineering Co., Inc.  
lheying@mecoengineering.com

**Taylor Hill**

Missouri DOT  
Taylor.Hill@modot.mo.gov

**Jeffrey Hillegonds**

Progressive AE  
hillegonds@progressiveae.com

**Stephen Hobbs**

McElhanney Consulting Services Ltd  
shobbs@mcelhanney.com

**Heath Hoftiezer**

City of Sioux Falls, Engineering  
hhoftiezer@siouxfalls.org

**Lindsay Hogan**

Missouri DOT  
Lindsay.Hogan@modot.mo.gov

**Tom Honich**

Missouri DOT  
thomas.honich@modot.mo.gov

**Randall Hoskins**

City of Lincoln  
rhoskins@lincoln.ne.gov

**Sean Houck**

RBF Consulting  
shouck@rbf.com

**Kevin House**

Parametrix  
khouse@parametrix.com

**Deborah Huffman**

Missouri DOT  
Deborah.Huffman@modot.mo.gov

**Ronald Hughes**

NC State University  
ron\_hughes@ncsu.edu

**Darren Hymas**

HDR, Inc.  
darren.hymas@hdrinc.com

**Vaughan Inman**

SAIC  
vinman@fhwa.dot.gov

**Hillary Isebrands**

Iowa State University  
hillaryi@iastate.edu

**Beau Istre**

LADOTD  
beauistre@dotd.la.gov

**ATTENDEE LIST**

**Brewer James**  
Kansas DOT  
jbrewer@ksdot.org

**Sigurdur Johannsson**  
Vegagerdin  
skj@vegagerdin.is

**Jeena John**  
Missouri DOT  
Jeena.John@MoDOT.mo.gov

**Mark Johnson**  
MTJ Engineering  
mtj@mtjengineering.com

**Randy Johnson**  
PTV America  
rjohnson@ptvamerica.com

**Randy Johnson**  
Missouri DOT  
Randy.Johnson@modot.mo.gov

**John Katers**  
Orchard, Hiltz & McCliment, Inc.  
laurie.nesmith@ohm-advisors.com

**Stephen Keen**  
TSH  
skeen@tsh.ca

**JD Kehrman**  
City of Bowling Green  
jdkehrman@sbcglobal.net

**Sean Kellar**  
City of Loveland, CO  
kellas@ci.loveland.co.us

**Charles Keller**  
Road Commission for Oakland County  
ckeller@rcoc.org

**Janet Kennedy**  
Transport Research Laboratory  
jkennedy@trl.co.uk

**Mary Kincaid**  
Atlas Engineering, Inc.  
skerwin@atlasengineering.com

**Steve King**  
Kansas DOT  
stevenk@ksdot.org

**Matt Kinsella**  
Ulteig Engineers, INc.  
Matt.Kinsella@ulteig.com

**Christopher Kinzel**  
HDR, Inc.  
amy.makovec@hdrinc.com

**James Knostman**  
City of Loveland  
Knostt@ci.loveland.co.us

**Theron Knouse**  
Virginia DOT  
theron.knouse@vdot.virginia.gov

**Maneesh Krishnan**  
McClelland Consulting Engineers, Inc  
mkrishn@uark.edu

**James Krzeminski**  
HDR, Inc.  
jamie.krzeminski@hdrinc.com

**Kevin Kuhlow**  
Ourston Roundabout Engineering  
kkuhlow@ourston.com

**Dale Kuperus**  
Ada County Highway District  
jpawling@achd.ada.id.us

**Robert Kurylko**  
Stantec  
robert.kurylko@stantec.com

**Scott Kuznicki**  
Parsons Brinckerhoff  
sk@midwestroads.com

**Paul LaFrance**  
Municipality of Anchorage  
lafrancepj@muni.org

**Shannon Lambert**  
Reid Middleton Inc.  
slambert@reidmidd.com

**Cheryl Lambrecht**  
Kansas DOT  
lambrecht@ksdot.org

**Philippe Landry**  
City of Ottawa  
philippe.landry@ottawa.ca

**NATIONAL ROUNDABOUT CONFERENCE**  
**Sunday, May 18 – Wednesday, May 21, 2008**

---

**ATTENDEE LIST**

<b>Mark Lenters</b> Ourston Roundabout Engineering Inc. mlenters@ourston.com	<b>Mark MacDonald</b> CBCL markmacd@cbcl.ca
<b>Venard Lewis</b> Transpo Group lewisv@thetranspogroup.com	<b>Michael MacDonald</b> CBCL Limited mikemacd@cbcl.ca
<b>Alonzo Linan</b> City of Olathe ALinan@OLATHEKS.ORG	<b>Lesley Mace</b> City of Colorado Springs lmace@springsgov.com
<b>Matthew Loeffler</b> Butler County Engineers loefferm@bceo.org	<b>Paul Mackey</b> Safestreet Inc. safest@ruesecure.com
<b>Nini Long</b> British Columbia Ministry of Transportation nini.long@gov.bc.ca	<b>Patty Mahan</b> American Public Works Association pmahan@apwa.net
<b>Richard Long</b> Western Michigan University richard.long@wmich.edu	<b>Srinivas Manadvilli</b> Insurance Institute for Highway Safety smandavilli@iihs.org
<b>Michael Love</b> Franklin County Engineers mlove@franklincountyengineer.org	<b>Kevin Manning</b> Missouri DOT kevin.manning@modot.mo.gov
<b>Allan Ludiker</b> Missouri DOT Allan.Ludiker@modot.mo.gov	<b>Thomas Mannino</b> Kaskaskia Engineering Group, LLC tjm@kaskaskiaeng.com
<b>Raymond Luk</b> Mannik & Smith Group rluk@manniksmithgroup.com	<b>Ted Mason</b> Idaho Transportation Department ted.mason@itd.idaho.gov
<b>Mohammed Lutfi</b> Road Commission for Oakland County mlutfi@RCOC.ORG	<b>Zachary Matley</b> W-Trans zmatley@w-trans.com
<b>Mark Lutjeharms</b> Schemmer mlutjeharms@schemmer.com	<b>Charles May</b> Schwab-Eaton.com cmay@schwab-eaton.com
<b>Abby Lyles</b> TranSystems amlyles@transystems.com	<b>Sean McAtee</b> LSA Associates Sean.McAtee@lsa-assoc.com
<b>Robert Lynch</b> Missouri DOT Robert.Lynch@modot.mo.gov	<b>Michael McBride</b> City of Carmel Indiana mmcbride@carmel.in.gov
<b>David MacDonald</b> Missouri DOT david.macdonald@modot.mo.gov	<b>Dan McCormick</b> City of Madison dmccormick@cityofmadison.com

**ATTENDEE LIST**

**Howard McCulloch**

New York State DOT  
hmcculloch@dot.state.ny.us

**Kari McDowell**

McDowell Engineering  
kari@mcdowelleng.com

**Patrick McGrady**

Reid Middleton Inc.  
pmcgrady@reidmidd.com

**Lynn Means**

Metro Transportation Group, Inc.  
lmm@metrotransportation.com

**Becky Mease-Doble**

McCormick Taylor, Inc.  
bmdoble@mtmail.biz

**Michael Meeks**

Franklin County Engineers  
mmeeks@fceo.co.franklin.oh.us

**Jeff Meindl**

Metro Transportation Group, Inc.  
jm@metrotransportation.com

**David Mennenga**

George Butler Associates, Inc.  
dmennenga@gbutler.com

**Jack Messer**

City of Janesville  
messerj@ci.janesville.wi.us

**Stephen Metzger**

DLZ Michigan, Inc.  
smetzer@dlz.com

**Kathleen Meyerkord**

TranSystems  
kmmeyerkord@transystems.com

**Arthur Miller**

JR Engineering  
amiller@jrengineering.com

**John Miller**

Missouri DOT  
john.p.miller@modot.mo.gov

**Richard Mitchell**

Mobile County Public Works  
rmitchell@mobilecounty.net

**Brian Moore**

Burgess & Niple, Inc.  
bmoore@burnip.com

**Stuart Moore**

Drexel Barrell  
smoore@drexelbarrell.com

**Lisa Mosley**

HNTB  
lmosley@hntb.com

**Jedidiah Munroe**

Ourston Roundabout Engineering  
jmunroe@ourston.com

**Edward Myers**

Kittelson & Associates, Inc.  
doosterhoff@kittelson.com

**Matthew Myers**

Missouri DOT  
Matthew.Myers@modot.mo.gov

**Hideki Nakamura**

Nagoya University  
nakamura@genv.nagoya-u.ac.jp

**Jerald Nelson**

Stanley Consultant, Inc.  
nelsonjerry@stanleygroup.com

**Jon Nelson**

Missouri DOT  
jonathan.nelson@modot.mo.gov

**Susan Nelson**

MoDot  
susan.nelson@modot.mo.gov

**Leah Ness**

Ayres Associates  
nessl@ayresassociates.com

**Stephen Nevill**

CH2M HILL  
Steve.Nevill@ch2m.com

**Steve Newman**

Korda/Nemeth Engineering  
steve.newman@korda.com

**Michael Niederhauser**

MD State Highway Administration  
mniederhauser@sha.state.md.us

**ATTENDEE LIST**

**Tawn Nugent**

GBA  
tnugent@gbutler.com

**Andrew O'Brien**

O'Brien Traffic  
andrew@obrientraffic.com

**Jeff O'Brien**

Road Commission for Oakland County  
jobrien@rcoc.org

**Tim Oligschlaeger**

Missouri DOT  
tim.oligschlaeger@modot.mo.gov

**Pat O'Neill**

City of University Place  
poneill@cityofup.com

**Kelli Owen**

Reid Middleton Inc.  
kowen@reidmidd.com

**James Pace**

Kimley-Horn and Associates  
jason.pace@kimley-horn.com

**Richard Pain**

Transportation Research Board  
rpain@nas.edu

**Troy Pankratz**

Ourston Roundabout Engineering  
tpankratz@ourston.com

**Douglas Parke**

TranSystems  
dbparke@transystems.com

**Paula Parke**

City of Lenexa  
pparke@ci.lenexa.ks.us

**Matthew Parker**

George Butler Associates, Inc.  
mparker@gbutler.com

**Craig Parks**

American Structurepoint, Inc.  
cparks@structurepoint.com

**Lowell Patton**

City of Fernley  
lpatton@cityoffernley.org

**Herodotos Pentas**

Atlas Engineering, Inc.  
cgoostrey@atlasengineering.com

**Greg Perry**

iTRANS Consulting  
gperry@itransconsulting.com

**Taran Peters**

Dillon Consulting Ltd  
tpeters@dillon.ca

**Justin Petersen**

Olsson Associates  
jpetersen@oaconsulting.com

**Ryan Peterson**

Project Engineering Consultants  
ryan@pecidaho.com

**Mike Piernicky**

Olsson Associates  
mpiernicky@oaconsulting.com

**Alek Pochowski**

Kittelson & Associates, Inc.  
apochowski@kittelson.com

**Steve Popke**

Mead and Hunt, Inc.  
steve.popke@meadhunt.com

**Patricia Powers-Zermeno**

Arizona Department of Transportation  
ppowers-zermeno@azdot.gov

**Damion Pregitzer**

City of Ames  
dpregitzer@city.ames.ia.us

**Erik Preston**

Parametrix  
epreston@parametrix.com

**Rachel Price**

Reid Middleton Inc.  
rprice@reidmidd.com

**Greg Proctor**

Region of Waterloo  
pgreg@region.waterloo.on.ca

**Eric Reinkemeyer**

Delich, Roth & Goodwillie, P.A.  
accounting@drngineers.com

**NATIONAL ROUNDBOUT CONFERENCE**  
**Sunday, May 18 – Wednesday, May 21, 2008**

---

**ATTENDEE LIST**

**Robert Rescot**

KU Civil, Environmental & Architectural Engineering  
rrescot@ku.edu

**Richard Retting**

Insurance Institute for Highway Safety  
rretting@iihs.org

**Ed Rice**

DOT/Federal Highway Administration  
ed.rice@dot.gov

**Ken Richardson**

City of Dublin  
krichadrson@dublin.oh.us

**Dustin Riechmann**

Crawford, Bunte, Brammeier  
driechmann@cbbtraffic.com

**Matthew Rilling**

Perteet  
mrilling@perteet.com

**Scott Ritchie**

Roundabouts & Traffic Engineering  
tamara@roundabouts.us

**Kristy Rizek**

Kansas DOT  
kristyr@ksdot.org

**Cornell Robertson**

Franklin County Engineers  
CRobertson@franklincountyengineer.org

**Lee Rodegerdts**

Kittelsohn & Associates, Inc.  
lrodegerdts@kittelsohn.com

**James Rosenow**

Minnesota DOT  
james.rosenow@dot.state.mn.us

**Kurt Rotering**

HWS Consulting Group  
krotering@hws.com

**Randy Rowson**

Wilbur Smith Associates  
rrowson@wilbursmith.com

**Joe Ruffer**

Mobile County Public Works  
jruffer@mobilecounty.net

**Eugene Russell**

Kansas State University  
geno@ksu.edu

**Phil Rust**

Ada County Highway District  
prust@achd.ada.id.us

**Stacey Salvatore**

City of Colorado Springs, Traffic Engineering  
ssalvatore@springsgov.com

**Lorena Sanchez**

Shafer, Kline & Warren  
lsanchez@skw-inc.com

**Mike Sanders**

Missouri DOT  
Mike.Sanders@modot.mo.gov

**Todd Sanders**

SEH/RTE  
tsanders@sehinc.com

**Stephen Sargeant**

TSH/AECOM Canada  
ssargeant@tsh.ca

**Koichi Sasaki**

CHODAI CO.,LTD.  
sasaki-k@chodai.co.jp

**Clive Sawers**

Moor Value Ltd  
penntraff@aol.com

**Margaret Sawers**

Moor Value Ltd  
anngemini@aol.com

**John Schaefer**

Missouri DOT  
john.schaeferjr@modot.mo.gov

**Justin Schaeffer**

City of Colorado Springs, Traffic Engineering Division  
jschaeffer@springsgov.com

**Ellette Schamp**

City of Hilliard  
lschamp@cityofhilliard.com

**Bastian Schroeder**

North Carolina State University  
Bastian\_Schroeder@ncsu.edu

**ATTENDEE LIST**

**Nate Schroeder**

DKS Associates  
nns@dksassociates.com

**Douglas M. Senso**

R.A. Smith National, Inc.  
courtney.both@rasmithnational.com

**Theodore Setas**

Hoyle Tanner & Associates  
tsetas@hta-nh.com

**John Seyer**

HDR, Inc.  
john.seyer@hdrinc.com

**Jason Shafer**

Missouri DOT  
jason.shafer@modot.mo.gov

**Ray Shank**

Missouri DOT  
raymond.shank@modot.mo.gov

**Greg Sharp**

ENTRAN  
gsharp@entran.us

**Brian Shields**

City of Overland Park  
brian.shields@opkansas.org

**Daniel Shihundu**

Transoft Solutions Inc.  
daniel@transoftsolutions.com

**Hadi Shirazi**

LADOTD  
hshirazi@dotd.la.gov

**Joseph Shoemaker**

St. Tammany Parish Government-Dept. of Engineering  
ethel@stpgov.org

**Ken Sides**

City of Clearwater  
ken.sides@myclearwater.com

**Kurt Sielbach**

Wisconsin DOT  
sielbak@wsdot.wa.gov

**Jason Smallwood**

EMH&T  
jsmallwood@emht.com

**Keith Smith**

Missouri DOT  
keith.smith@modot.mo.gov

**Dan Solomon**

Ministry of Transportation  
Dan.Solomon@Ontario.ca

**Gyuing Son**

Perteet  
jamies@perteet.com

**Henning Sorensen**

Road Directorate  
has@vd.dk

**Alex Sorton**

Northwestern University  
asorton@aol.com

**Amphone Soupharath**

VHB  
asoupharath@vhb.com

**Kirk Spalding**

Engineering, Inc.  
kspalding@enginc.com

**David Stanek**

Fehr & Peers  
j.larson@fehrandpeers.com

**Harry Stanford**

City of Fort Collins -Traffic Operations  
wstanford@fcgov.com

**Ellie Stanoch**

American Structurepoint, Inc.  
estanoch@structurepoint.com

**Craig Steigerwalt**

URS Corporation  
craig\_steigerwalt@urscorp.com

**Michelle Stevens**

Felsburg Holt & Ullevig  
michelle.stevens@fhueng.com

**Greg Stidham**

Parametrix  
gstidham@parametrix.com

**Edward Stollof**

Institute of Transportation Engineers  
estollof@ite.org



**NATIONAL ROUNDABOUT CONFERENCE**  
**Sunday, May 18 – Wednesday, May 21, 2008**

---

**ATTENDEE LIST**

**Richard Stone**

City of Columbia Public Works Department  
rlstone@gocolumbiamo.com

**Julie Stotlemeyer**

Missouri DOT  
julie.stotlemeyer@modot.mo.gov

**Josh Straka**

Strand Associates, Inc.  
josh.straka@strand.com

**Kip Strauss**

HNTB  
KSTRAUSS@HNTB.com

**William Strobel**

Wisconsin DOT  
william.strobel@dot.state.wi.us

**Jessica Stroda**

George Butler Associates, Inc.  
jstroda@gbutler.com

**Lisa Stupps**

Missouri DOT  
Lisa.Stupps@modot.mo.gov

**Vernon Swing**

RLK Incorporated  
vswing@rlkinc.com

**Lois Thibault**

US Access Board  
thibault@access-board.gov

**Stephen Thieken**

Burgess & Niple, Inc.  
STHIEKEN@BURNIP.COM

**Deirdre Thompson**

Michigan Department of Transportation  
thompsond@michigan.gov

**Jeff Todd**

Traffic Planning and Design, Inc.  
jtodd@trafficpd.com

**Marian Tracz**

Krakov University of Technology  
mtracz@pk.edu.pl

**Daniel J. Troia**

Ingham County Road Commission  
dtroia@inghamcrc.org

**Darwin Tyacke**

British Columbia Ministry of Transportation  
Darwin.Tyacke@gov.bc.ca

**Chuck Unterreiner**

American Structurepoint, Inc.  
cunterreiner@structurepoint.com

**Rosolino Vaiana**

University of Calabria  
vaiana@unical.it

**Joe Valentinuzzi**

British Columbia Ministry of Transportation  
joe.valentinuzzi@gov.bc.ca

**Steve van De Keere**

Regional Municipality of Waterloo  
vsteve@region.waterloo.on.ca

**Ryan Vanderputten**

The City of Calgary  
RVANDERPUTTEN@CALGARY.CA

**Kamesh Vedula**

Omni-Means  
kvedula@omnimeans.com

**Linda Voss**

City of Topeka, Kansas  
lvoss@topeka.org

**Bruce Wacker**

City of Overland Park  
bruce.wacker@opkansas.org

**Edmund Waddell**

Ourston Roundabout Engineering  
ewaddell@ourston.com

**Michael Wahlstedt**

TranSystems  
mrwahlstedt@TRANSYSTEMS.COM

**Christopher Waidner**

The Troyer Group, Inc.  
clw@troyergroup.com

**Benjamin Waldman**

LSC Transportation Consultants Inc.  
ben@lscdenver.com

**Brian Walsh**

Washington State DOT  
walshb@wsdot.wa.gov

**ATTENDEE LIST**

**Patricia Walsh Burke**

Stahly Engineering  
pburke@seaeng.com

**Davey Warren**

DOT/Federal Highway Administration  
davey.warren@dot.gov

**Danial Watts**

Southwest Missouri Council of Governments  
danwatts@missouristate.edu

**Raymond Webb**

BWR  
rwebb@bwrcorp.com

**Phil Weber**

Ourston Roundabouts Canada  
pweber@ourston.ca

**Ting Wei**

American Structurepoint, Inc.  
tingwei@structurepoint.com

**Jason Whitten**

DLZ Michigan, Inc.  
jwhitten@dlz.com

**Martina Wilkinson**

Larimer County  
WilkinM@co.larimer.co.us

**Charles Williams**

St. Tammany Parish Government-Dept. of Engineering  
eddie@stpgov.org

**Jacob Wilson**

Missouri DOT  
Jacob.Wilson@modot.mo.gov

**Adrian Witte**

Bunt & Associates  
awitte@bunteng.com

**Scott Wolf**

USDOT-FHWA  
scott.wolf@fhwa.dot.gov

**Eric Woodhouse**

Traffic Sign Solutions Inc.  
eric.woodhouse@trafficsignsolutions.com

**Curt Woolsey**

Missouri DOT  
[curt.woolsey@modot.mo.gov](mailto:curt.woolsey@modot.mo.gov)

**David Woosley**

City of Lawrence Kansas  
dwoosley@ci.lawrence.ks.us

**Bradley William Yarger**

Yarger Engineering, Inc.  
bwyarger@yargerengineering.com

**Juan Yin**

Missouri DOT  
Juan.Yin@modot.mo.gov

**Yoshiyuki Yoneyama**

CHODAI CO.,LTD.  
yoneyama-y@chodai.co.jp

**Mohsin Zaidi**

PWD, Kansas City, Missouri  
mohsin\_zaidi@kcmo.org

**Wei Zhang**

FHWA  
wei.zhang@fhwa.dot.gov



### Mobile Phone Manners

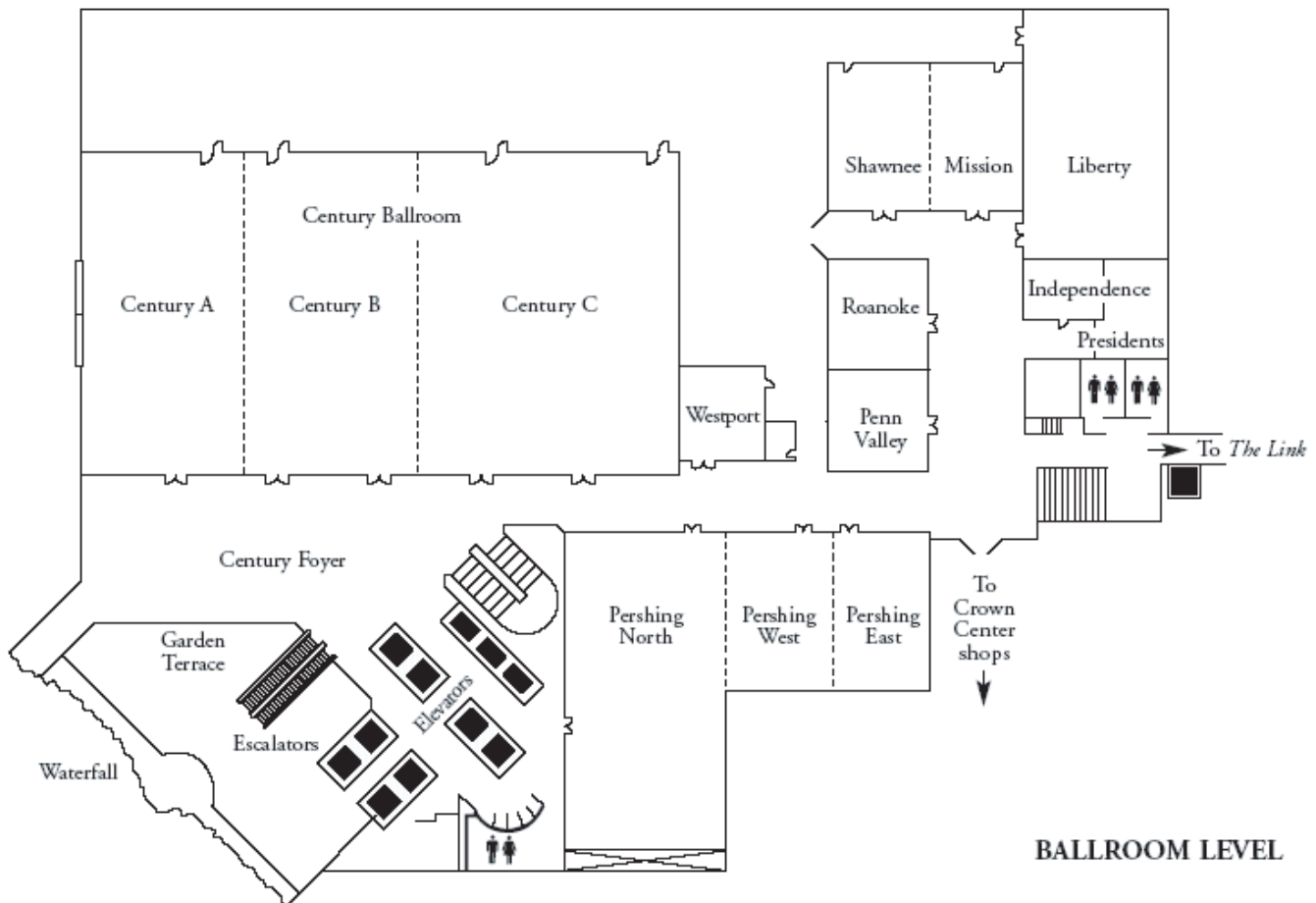
As a courtesy to other attendees, please observe good mobile phone manners. When attending meetings and in the public areas adjacent to these activities, please turn off your cell phones and other wireless communications devices or use the silent notification options. Thank you for your cooperation.

### Local Information

[www.VisitKC.com](http://www.VisitKC.com)

### Hotel Information

Westin Crown Center  
1 Pershing Road  
Kansas City, Missouri 64108  
816-474-4400  
Guest Fax: 816-391-4438



---

**The Transportation Research Board** is a unit of the National Research Council, which serves as an independent advisor to the federal government on scientific and technical questions of national importance. The Research Council, jointly administered by the National Academy of Sciences, the National Academy of Engineering, and the Institute of Medicine, brings the resources of the entire scientific and technical community to bear on national problems through its volunteer advisory committees.

---

## THE NATIONAL ACADEMIES

*Advisers to the Nation on Science, Engineering, and Medicine*

The nation turns to the National Academies—National Academy of Sciences, National Academy of Engineering, Institute of Medicine, and National Research Council—for independent, objective advice on issues that affect people's lives worldwide.

[www.national-academies.org](http://www.national-academies.org)